

MESSAGE FROM DIRECTOR
Bruce Vander Sanden
Sixth Judicial District of Correctional Services

On behalf of the staff of the Sixth Judicial District Department of Correctional Services, I am pleased to present this 2012-2013 Annual Report.

As the new director, I'd like to take this opportunity to reflect on the accomplishments of the past year, while looking ahead to our future goals and strategies.

The Sixth Judicial District Department of Correctional Services continues to provide an array of services: pretrial interviews and supervision, presentence investigations, probation and parole supervision, residential placement, and other specialized supervision services such as drug treatment court. Our staff strives to balance accountability and treatment in order to facilitate community safety. This is evidenced by the work of our High Risk Unit and numerous credentialed staff that provide treatment and educational services. Our ultimate goal is to ensure that "*no new victims*" are created. We strive to do this in an evidence based and cost effective manner that allows us to maximize the use of available resources. It is our staff that makes the department successful.

Near the end of the fiscal year when I was appointed director, we embarked on a new journey. This journey includes:

- A review of system wide practices and procedures. The goal is to remove or modify inefficiencies while continuing our focus on evidence-based practices.
- Director-staff retreats. The goal is to review the department's strengths, weaknesses, opportunities and threats (SWOT). This review will provide us with a roadmap to continue to move the department forward.
- The opening of ANCHOR residential center. The goal is to provide residential bed space to criminal justice-involved individuals with mental health and substance abuse issues. The need to address these issues continues to grow within the corrections population. This is the first-of-its-kind facility in Iowa.
- Pilot Batterers Education program (Achieving Change through Value Based Behavior: ACTV). This new program shows promise for reducing violence among participants.

This report is submitted for filing with the Board of Supervisors of each county in the Sixth District, per Iowa Code 905.4. This document reflects activities of the Sixth Judicial District Department of Correctional Services from July 1, 2012 through June 30, 2013.

I would like to thank and recognize the Board of Directors for placing their confidence in me as the new director; the work of our advisory committees; and most importantly, the staff of the Sixth Judicial District Department of Correctional Services. I am also grateful to our community partners who continually strive to improve our outcomes.

Respectfully submitted,

Bruce Vander Sanden, Director

**SIXTH JUDICIAL DISTRICT
DEPARTMENT OF CORRECTIONAL SERVICES
TABLE OF CONTENTS**

Message from Director	1
Table of Contents	2
Vision/Mission/Values	3
CBC Overview/History	4
Locations	7
Table of Organization	8
Department Committees	9
Program/Treatment Services Overview	10
Staff/Offender Community Service/Work Crews	28
Financial Information	
Expenditure Report	30
Expenditure by Cost Center	30
Expenditure by Major Cost Center	30
Special Project by Revenue Source	31
Offender Fees Collected	32
Average Daily Costs/Average Costs	32
DOC Financial Status Report	33
Statistics	
Field Services Supervision Status	34
Specialty	38
Residential	44
Length of Stay.....	50
Average Daily Population	50
Intervention Program.....	51
Intervention (Internal)	54
Presentence Investigation	67
Pretrial Interview	67
Optional Items	
Other Services Provided.....	68
Assessments	69
Revocations.....	70
Recidivism	72

VISION / MISSION / VALUES

VISION STATEMENT

Iowa Community Corrections is a place where:

- ◆ Every offender makes it and our communities are safe;
- ◆ We invest in partnerships so that all members of the community have hope of succeeding;
- ◆ Individual growth is encouraged and expected, and achievement is recognized;
- ◆ Shared decision-making and team participation demonstrates our mutual respect;
- ◆ Offenders are held accountable;
- ◆ Diversity is our strength; cultural competence is achieved;
- ◆ Innovation is valued;
- ◆ We measure our results and do what we know works.

MISSION STATEMENT

The mission statement of the Iowa Department of Corrections is to: Advance successful offender reentry to protect the public, staff and offenders from victimization.

GUIDING PRINCIPLES

We believe:

- People can change
- In a Culturally Competent Workforce
- In Respect & Equality
- In Accountability
- In Integrity
- In Innovation
- In Teamwork

CBC OVERVIEW/HISTORY

The Sixth Judicial District (6JD) covers a six county area in Iowa (Benton, Iowa, Johnson, Jones, Linn and Tama). The 6JD had its' early beginnings in March of 1973 with the Community Court Services Project, funded by a Law Enforcement Assistance Administration grant. The Project resulted in three integrated programs: pretrial release on recognizance, pretrial release with supervision, and probation services. In July 1977 Chapter 905 of the Code of Iowa went into effect restructuring Iowa community-based corrections. Under the new law, a local Board of Directors supported by an Advisory Committee administered community-based corrections. In 1983 the legislature created a separate Iowa Department of Corrections, but transferred parole and work release administration to local control, under the 6JD.

Since this time, many changes have taken place in the 6JD. Land has been purchased and new offices and residential facilities constructed in three counties, consolidating services once scattered throughout communities. Clients supervised in the community have grown from a little over 2,000 in 1983, to over 4,400 in 2013. One small residential facility in 1983 housed 44 clients. Three facilities are now in place in the 6JD, with a total bed capacity of 237 clients. There were 81 employees in 1983; as of June 30, 2013 we had 186 FTE employees. While we continue to provide the services specifically required by the Code of Iowa, the 6JD also prides itself in keeping up with the research/evidence based practices, as well as being innovative in that service delivery. A new residential mental health facility, the ANCHOR Center, was completed on the Corrections Complex in Cedar Rapids. The Center is designed to serve up to approximately 150 clients in the outpatient programming and was approved for outpatient correctional substance abuse licensure through the Iowa Department of Public Health. Eventually, as funding allows, the facility will also house and provide services to 26 residential clients. The facility is a modern, custom designed facility for behavioral health clientele, with an emphasis on the balance between treatment and security.

Quality Assurance

In 2007, an Executive Officer was hired to implement a range of Quality Assurance practices with the goal of improving processes that would ultimately lead to greater offender success. In 2011, four supervisors were re-classified as Executive Officers with job duties dedicated to Quality Assurance. Between July 1, 2012 and June 30, 2013, the Quality Assurance Team accomplished:

- ◆ Audit tools for case managers were revised to fit current needs.
- ◆ 4 evidence-based classes that focus on helping offenders reduce criminal thinking patterns and teach life skills were monitored for program fidelity and feedback given to the facilitators. This process helps ensure that facilitators are delivering the class material to offenders accurately and consistently so that offenders use the skills learned to reduce criminal behavior and create fewer victims.
- ◆ 195 case plan audits, 247 LSI-R audits, 166 program audits and 202 content audits were completed. Auditors met with agents to coach them on audit findings. These audits help agents improve their case management efforts with offenders. Research shows that when treatment needs are correctly identified and appropriate treatment approaches are utilized, the risk of re-offending is significantly reduced. Audits also ensure that staff is following case management, assessment and documentation policies and procedures.
- ◆ Several training issues were identified from patterns in audit results and booster sessions were designed and delivered to meet these needs.

CBC Overview/History – continued

- ◆ Offender Exit Surveys were fully implemented in both field offices and residential facilities. The survey form was revised this year to capture more precise and useful information. Survey results were aggregated and shared with Management Team. Surveys completed so far have indicated that most offenders are pleased with the services they have received while on supervision. One area receiving generally high marks is that of the relationship between the offender and the supervising agent. Many offenders noted that they feel their agent spent adequate time with them and genuinely cared about their success.
- ◆ Customer satisfaction surveys were developed for the judiciary and for identified agencies that provide services to our offenders. The survey results provided excellent feedback that will be used to improve our services and were shared with Management Team.

Training

Because training staff to be competent in the requisite knowledge, skills, and competencies is directly related to our ability to achieve successful results with offenders, the District hired a Training Officer in 2008 to develop and implement quality training.

FY 2009	The emphasis was to develop and train all staff on Use of Force and Personal Safety.
FY 2010	Developed internal training modules on: New Employee Orientation, Field Officer Training, Mandatory Child abuse/Dependent Adult abuse training, and Code of Ethics.
FY 2011	Focused on online e-learning training (health and safety mandatory training modules), further development of the training database to track staff training more efficiently, and training on cognitive based curriculums.
FY 2012	Focused on the quality of training with feedback from participants on what worked and where training can be improved.
FY 2013	Focused on meeting the e-learning requirements along with SVP implementation and PREA compliance.
Benchmark:	165 (99%) employees completed mandatory training per policy (76.1% completed 2012-2013)
Benchmark:	9,115 Total Training Hours were completed by district employees (7,686 completed 2012-2013)

Internal training included:

1. 11 Volunteer Staff completed (16 hour) Orientation training (Encompass) in February 2013.
2. 8 Safety Training Boosters sessions were held; staff is required to complete 1/year.
3. 9 Motivational Interviewing Booster sessions were held topics (4 processes of MI); staff is required to complete 1/year.
4. 188 (76.1%) employees successfully completed the required E-learning training modules.
5. Leadership Academy created and implemented for frontline staff, 10 participants graduated from the first academy. Second academy created with feedback from first class.
6. 12 Fire Extinguisher Simulator Training sessions offered August 2012.
7. 8 Wellness Committee trainings –Live Healthy Iowa, spring cleaning, inflammation connection, healthy homes & green initiative, 211, nutrients for weight loss, how to get too sleep, less mess equals less stress, outlook calendar.

CBC Overview/History – continued

8. 3 AA/EEO Committee Trainings –Ethnic Fest, LGBTI, Living with Schizophrenia In your Voice.
9. 7 American Heart Association CPR/AED Trainings in July 2012–June 2013.
10. Mental health focused trainings, native American substance abuse, problem gambling, seeking safety.

Other initiatives included:

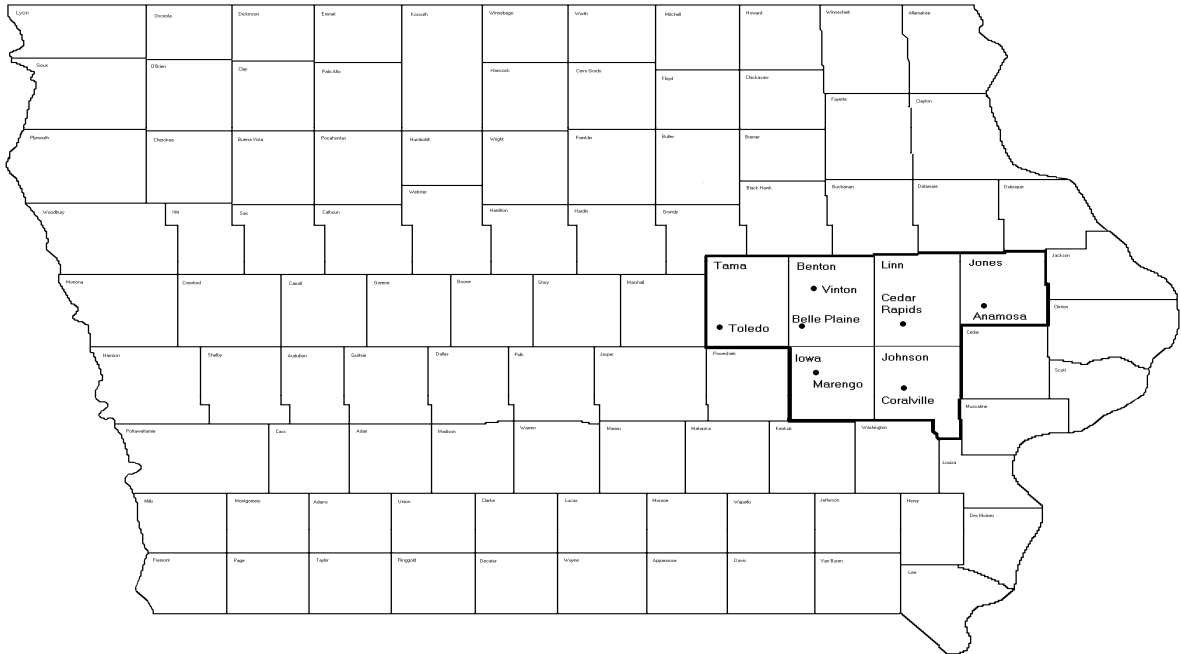
1. Racial Disparity Charter Committee (RDCC) - Dr. Loes from Mt. Mercy University, RDCC Survey identify issues that pertain to racial disparity, data collection completed, data is being calculated for research with Urban Institute
2. Motivational Interviewing (MI) – implementation of the four processes of MI from 2013 publication
3. Offender Employment Trainings - Offender Employment Retention Worth the Effort - July 2012
4. BEP Facilitator's - ACTV curriculum implementation for BEP groups
5. Collaborative trainings with community partners (OES, MI, Firearms) ongoing
6. Implemented newly created training database in 2011, training hours tracking along with feedback for each training session.
7. High Risk Unit - Assisted with logistics of specialized HRU training ongoing
8. Moving on female offender program trained facilitators of curriculum
9. Family Team Meeting Facilitators trained facilitators
10. Bi-annual Orientation training (Encompass) for volunteers (mentors, interns); scheduled for February 2013 and September 2013

Priorities for fiscal 2012-2013 include:

1. Motivational Interviewing Competency Development (MITI) Pilot project
2. A.L.I.C.E. training for residential and field services offices
3. Course Facilitation/Train the Trainer continued development cadre of trainers for core courses
4. Leadership Academy for frontline staff
5. Leadership Training Academy for Youth Leadership Program Explorer Post
6. E-learning Benchmarks
7. Mandatory Reporter Training

SIXTH JUDICIAL DISTRICT DEPARTMENT OF CORRECTIONAL SERVICES

LOCATIONS



Toledo Office

105 E. Carleton
Toledo, IA 52342
641-484-4822
FAX: 641-484-2683

Vinton Office

116 E. Fourth Street
Vinton, IA 52349
319-472-5585
FAX: 319-472-5586

Anamosa Office

Jones County Courthouse
Anamosa, IA 52205
319-480-5301
FAX: 319-465-5091

Belle Plaine Office

708 12th Street
P.O. Box 122
Belle Plaine, IA 52208
319-444-3003

Marengo Office

Iowa County Courthouse
150 W. Marion Street
PO Box 365
Marengo, IA 52301
319-642-3145
FAX: 319-642-5247

Coralville/Iowa City Offices

John R. Stratton Center
2501 Holiday Road
Coralville, IA 52241
319-625-2650
FAX: 319-625-2659

Hope House
2501 Holiday Road
Coralville, IA 52241
319-625-2202
FAX: 319-625-2659

Kirkwood Office
509 Kirkwood Avenue
Iowa City, IA 52240
319-625-2114
FAX: 319-337-0506

Cedar Rapids Offices

Richard C. Wenzel Center
901 29th Avenue SW
Cedar Rapids, IA 52404
319-398-3907
FAX: 319-730-1267

William G. Faches Center
951 29th Avenue SW
Cedar Rapids, IA 52404
319-398-3675
FAX: 319-398-3684 or
319-730-1259

Lary A. Nelson Center
1001 29th Avenue SW
Cedar Rapids, IA 52404
319-398-3600
FAX: 319-297-3590

Gerald R. Hinzman Center
1051 29th Avenue SW
Cedar Rapids, IA 52404
319-398-3668
FAX: 319-398-3671

Neighborhood Offices

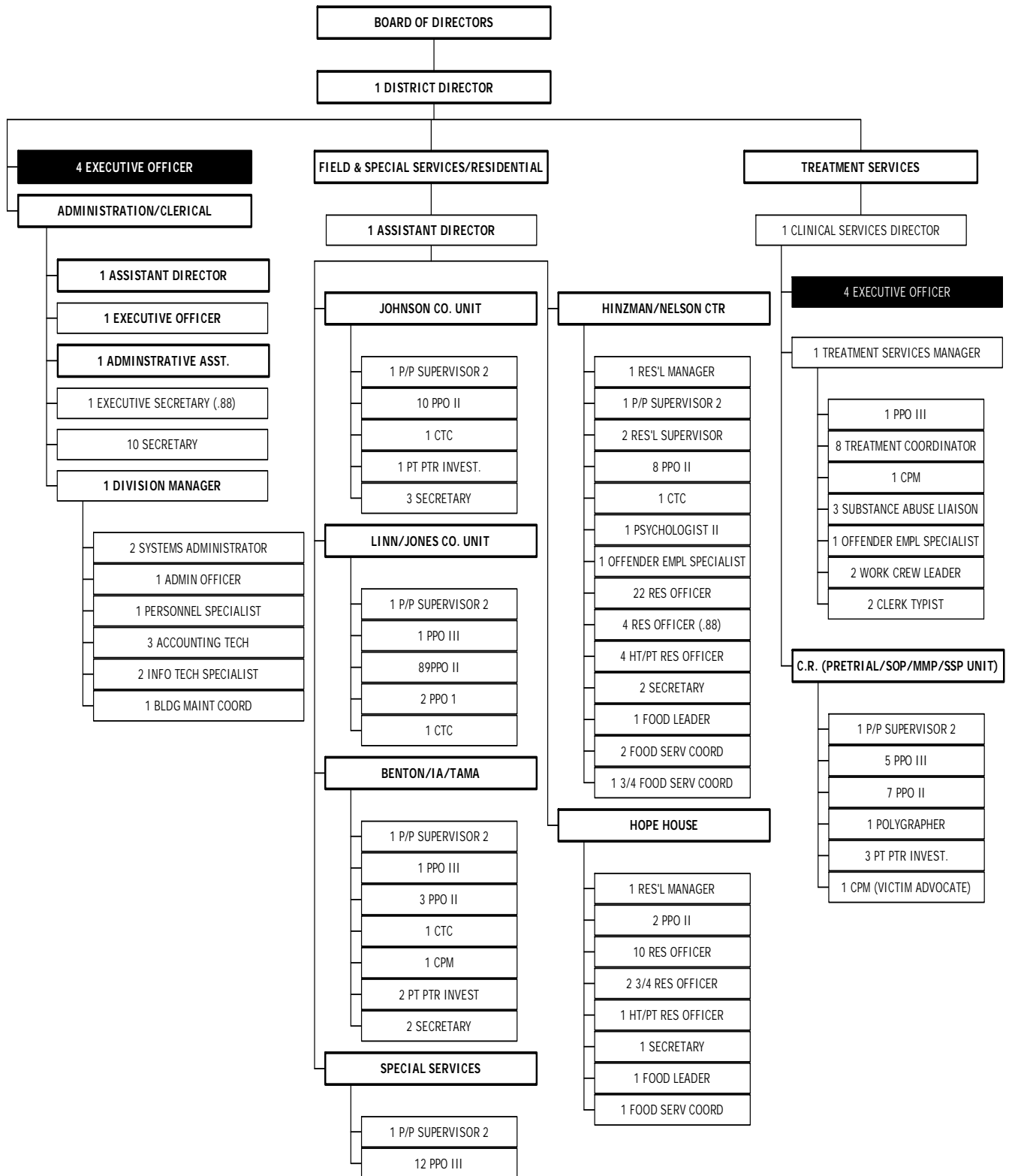
ANCHOR Center
3115 12th Street SW
Cedar Rapids, IA 52404
319-297-3500
FAX: 319-297-3533

Broadway Neighborhood
2105 Broadway
Iowa City, IA 52240
319-358-2993

Imagio Christi Church
1700 B Ave NE, Room 207
Cedar Rapids, IA 52402
319-363-1147

Wellington Heights
392 15th Street SE
Cedar Rapids, IA 52403
319-365-4303 or
319-365-4313

TABLE OF ORGANIZATION
Sixth Judicial District Department of Correctional Services
June 2013



**SIXTH JUDICIAL DISTRICT
DEPARTMENT OF CORRECTIONAL SERVICES
As of June 30, 2013**

Board of Directors

(Established in 1978)

(* Member of Executive Committee)

APPOINTED 2012

Benton County: * Terry Hertle
Iowa County: Ray Garringer
Johnson County: * Rod Sullivan
Jones County: Joe Oswald
Linn County: Lu Barron – 2nd Vice Chair
Tama County: Dan Anderson
Judicial Appointees: * Allan Thoms – Chair
* Jan Kazimour
* W. F. (Fred) Mims
Steve Ovel
Shelby Humbles, Jr.
Nancy Evans
Laura Seaton
Advisory Appointees: * Ken Popenhagen – 1st Vice Chair
* John Stratton
Sam Hargadine
Jessica Peckover
Jennifer Eiben
Dwayne Daniels
Dave Vermadahl

Northern Advisory

(Established in 1978)

Michele Canfield
Leland Freie
Jan Kazimour
Ken Popenhagen
Teel Salaun
Susan Spivey
Jim Unzeitig

Southern Advisory

(Established in 1978)

Steve Dolezal
Dale Helling
Tracey Mulcahey
Ryan Schnackel
John Stratton
Tom Widmer
Bob Dvorsky
Steve Rackis
Rod Sullivan

Client Services Advisory

(Established in 1995)

Sue Blome
Lora Morgan Dunham
John Garringer
Ben Kahn
Marcel Kielkucki
Jessica Peckover
Kathy Stone
Mary Thoms
Josh Weber
Melissa Wickham

Law Enforcement Advisory

(Established in 2001)

Barry Bedford
Candice Bennett
Harry Daugherty
Brian Gardner
Sam Hargadine
Wade Kisner
Lonny Pulkrabek
Wayne Jerman
Kenneth Runde
Sally Eggleston

Victim Services Advisory

(Established in 2007)

Chris Adcock
Tara Beck
Kim Clair
Jennifer Eiben
Sally Eggleston
Nelly Hill
Gene Kehoe
Susan Lodmell
Karen Siler
Sharon Thompson
Regina Wilkins
Anastasia Wilson
Stacia Wissink
Dara Xaivong
Cassandra Gibson
Jessica Peckover
Karla Miller

Cultural Competency Advisory

(Established in 2009)

Audra Burns
Dwayne Daniels
Shelby Humbles, Jr.
Shar Jones
W. F. (Fred) Mims
Orville Townsend

Rural Advisory

(Established in 2010)

Marc Baty
Kim Clair
Deb Hanus
Jane Junge
Tim Kapucian
Rick Lamere
Becky Pansegrau
Robert Rotter
Van Zimmer

NOTE: DCS staff serve on the above boards

PROGRAM / TREATMENT SERVICES OVERVIEW

PRETRIAL RELEASE

This program was established as an alternative to the traditional bail bond system. As a service to the court, arrestees are objectively assessed for likelihood to appear for court. A standardized interview that looks at issues related to stability (residence, employment/support, family ties, criminal record, community protection, etc.) is conducted at the jail 7 days/week. Information is verified and a recommendation is made to the court regarding release.

Release recommendations are not made when the information cannot be verified, with the exception of offenders whose backgrounds include records of failure to appear, absconding from supervision, and escape. For those offenders and certain others designated by policy, a bond recommendation is made.

Pretrial Interviews Conduct: 2,852

PRETRIAL RELEASE WITH SERVICES

Release With Services (RWS) provides supervision to offenders who are released to the supervision of the Department while awaiting trial, rather than released on their own recognizance or held in jail on cash bond. Probation/Parole Officers supervise RWS offenders to help ensure that offenders meet all court appearances and to inform the Court of any actions that violate their release agreement during the pretrial period.

⇒ **New Admissions:** 725
⇒ **Closures:** 695
⇒ **Active on 6/30/13:** 264
⇒ **Offenders Served:** 973

PRESENTENCE INVESTIGATION

Presentence investigations are prepared as mandated by the Code of Iowa and as ordered by the Court. The purpose of the report is:

- 1) To provide background information on defendants to assist the judiciary with determining appropriate sentences; and
- 2) To provide information to probation officers/institutional personnel to assist them in determining appropriate case planning/correctional programming for defendants.

Presentence Investigations contain the following information:

- official and defendant's version of offense;
- victim and restitution information (to include victim comments and statement of pecuniary damages);
- criminal record (to include juvenile and adult placements);
- family history;
- educational background;
- employment history;
- marital status and living arrangement;
- medical/psychiatric history;
- drug/alcohol usage;
- defendant's attitude;
- an evaluation of the defendant's needs, capabilities, and resources available to meet these needs;
- sentencing recommendation with reasons to support the recommendation

Additionally, in reports completed on persons convicted of sex offenses, the defendant's sexual history and relevant evaluations/assessments are included.

Presentence Investigations: 799

Program/Treatment Services Overview – continued

PROBATION

The largest program in Community Corrections serves as a major alternative to prison and jail incarceration. Offenders on probation undergo classification assessment, case planning, referrals to local treatment agencies, employment counseling and placement. Payment plans are monitored and offenders are held responsible for making restitution payments to victims.

Probation supervision provides structure in accordance with the assigned level of supervision based on the Iowa Risk Assessment/Reassessment. Additional assessments also identify offenders' needs, and corresponding conditions are imposed which requires offenders to confront the factors motivating the criminal behavior.

⇒ New Admissions:	2,440
⇒ Closures:	2,520
⇒ Active on 6/30/13:	3,102
⇒ Offenders Served:	5,757

NOTE: Totals above include all probation cases (sex offenders, low-risk probationers, intensive supervision, etc.). Each section below will have the individual totals for the supervision status.

PAROLE

Offenders released from prison, or from the residential OWI program, by the Board of Parole are supervised under the structure of parole to address high needs while monitoring and containing high-risk behaviors. The assessment and case management processes of parole are similar to that of probation offenders. Parolees are typically supervised at higher levels to provide additional support and structure during the critical period of transition from incarceration to community life. Emphasis is placed on offender transitional services. The district remains committed to improving offender reentry efforts. In accordance with an emerging body of evidence-based practices, reentry plans are developed with active offender participation to identify top criminogenic needs and planned interventions.

⇒ New Admissions:	225
⇒ Closures:	197
⇒ Active on 6/30/13:	221
⇒ Offenders Served:	413

NOTE: Totals above include all parole cases (sex offenders, intensive supervision, special sentences, etc.). Each section below will have the individual totals for the supervision status.

INTERSTATE COMPACT

The Interstate Commission for Adult Offender Supervision (ICAOS) is charged with overseeing the day-to-day operations of the Interstate Compact for Adult Offender Supervision. The Commission is a quasi-governmental administrative body vested by the states with broad regulatory authority. The Interstate Compact is a formal agreement between member states that seeks to promote public safety and victims' rights by systematically controlling the interstate movement of certain adult offenders. All 50 states, the District of Columbia, Puerto Rico, and the U.S. Virgin Islands are members of the Compact.

The Interstate Compact Offender Tracking System (ICOTS) is a web-based application launched in 2008 that allows member states to facilitate all compact business processes. ICOTS provides a managed workflow and maintains a database of offender transfer requests. In FY 2013, the number of transfer requests processed decreased by nearly 1 percent and is 4.6 percent below the historic figure set in FY 2011. Incoming cases to Iowa totaled 1, 499; outgoing totaled 1,338.

Program/Treatment Services Overview – continued

The demographic characteristics of the interstate offender population continue to be consistent with those offenders on state and local supervision when measured by gender, age and race. Male offenders on compact supervision are over-represented in both the probation and parole population. Of those offenders on compact supervision, 78.6% are male and 21.4% are female. This is consistent with the general probation and parole population according to the Bureau of Justice Statistics 2009 report. The top five crimes of conviction (Dangerous Drugs, Assault, Traffic Offenses, Burglary, and Larceny) account for over half of the total. Offenders who were a resident of the receiving state constituted the group most likely to have its request approved. In contrast, discretionary transfer requests are the least likely to be approved. The rate of acceptance for a discretionary transfer varies widely across the country with geography playing a significant role. The Midwest Region, with an average acceptance rate of 59 percent is most likely to accept a discretionary transfer.

⇒ New Admissions:	60
⇒ Closures:	58
⇒ Active on 6/30/13:	112
⇒ Offenders Served:	164

MONITORING AND MAINTENANCE PROGRAM (MMP)

The program began in May 2004 for low risk and minimum supervision cases scoring 11 or below on the Iowa Risk Assessment/Reassessment. Probationers are required to report changes immediately via program phone line, complete monthly reports, and meet with the supervising agent as required. Probationers are monitored for completion of financial obligations, court-ordered requirements, and law violations.

⇒ New Admissions:	333
⇒ Closures:	270
⇒ Active on 6/30/13:	374
⇒ Offenders Served:	639

SELF-SUPERVISED PROBATION (LOW RISK PROBATION)

The Sixth Judicial District developed a program to divert low-risk offenders from traditional supervised probation in response to a legislative mandate to reduce services to misdemeanor offenders. The self-supervised offender must fulfill court-ordered obligations just as offenders on supervised probation; however, the offender is responsible for completing these obligations on their own. The Department of Correctional Services staff are responsible for preparing probationary compliance reports, which are sent to the Judge to determine closure.

⇒ New Admissions:	1,715
⇒ Closures:	1,810
⇒ Active on 6/30/13:	1,404
⇒ Offenders Served:	3,197

Program/Treatment Services Overview – continued

SEX OFFENDER PROGRAM

The District provides treatment programs and surveillance (including GPS) to those offenders who commit sex crimes. Treatment is enhanced by the use of polygraph, physiological assessment, and psychological assessment. Offenders are responsible for paying for their own treatment.

We had 68 new intake enrollments of sex offenders into the SOP Unit. We had 77 sex offenders serving their special sentence parole at the end of the fiscal year.

There were 108 Polygraph examinations completed in the SOP Unit. There were also 21 Psychosexual Evaluations or Assessments completed. There were 10 AFFINITY Assessments completed.

The SOP Unit conducts ongoing treatment groups. Currently there are 6 primary groups, 4 maintenance groups, 3 Accountability Groups (Carey Guide), 1 women's group, and 1 special needs group for MR/DD or lower functioning offenders. In addition, 2 special needs offenders received individual curriculum services of the psychologist. We utilize the AFFINITY Assessment in most cases needing physiological assessment. The AFFINITY can be administered by multiple clinicians within the agency versus having a single PPG operator.

We previously developed curriculum for a victim survivor group for offenders' who were abused as children. We continue to provide the Sexually Abused Men (SAM) group curriculum on an as needed basis. We completed one SAM Group in Linn County this fiscal year.

During this fiscal year, there were 94 offenders being monitored on electronic monitoring (EM). There were also 16 polygraph examinations completed on federal offenders entering or enrolled in our SOP program.

Intensive Supervision – Sex Offenders

⇒ New Admissions:	68
⇒ Closures:	60
⇒ Active on 6/30/13:	87
⇒ Offenders Served:	182

Special Sentence – Sex Offenders

⇒ New Admissions:	24
⇒ Closures:	19
⇒ Active on 6/30/13:	77
⇒ Offenders Served:	86

PSYCHOLOGIST

The Psychologist ensures that appropriate services are provided to mentally and physically disabled clients. Mental health evaluations and referrals are made to local providers in the community. The Psychologist serves as a liaison between mental health, substance abuse treatment providers, and Department staff to help improve client services. The Psychologist also provides training to department staff to improve their ability to assess mental health issues and prepare effective case plan strategies.

The Psychologist is also an active member of the Sex Offender Treatment Unit and conducts testing and Psychosexual Evaluations. The Psychologist has also been involved in the facilitation of Sex Offender Treatment groups, including the use of a specialized curriculum for lower functioning offenders.

The Psychologist is a statewide trainer on the Levels of Services Inventory – Revised (LSI-R) which is used throughout the Judicial Districts. He is involved in the quality assurance of that instrument to ensure accurate assessment and case planning. In addition, he conducts standardized risk/needs assessments on our federal offenders and is actively involved in offender employment services. This includes resume writing, interviewing skills and re-entry planning.

Program/Treatment Services Overview – continued

HIGH RISK UNIT

The High Risk Unit (HRU) officers provide support to field service and residential units in all six counties of the district. They conduct checks in the community on probationers, parolees and residential clients to ensure compliance with supervision conditions. Detecting violations allows for intervention before new victims are created. It also allows for intermediate sanction or treatment responses. The Unit also includes three neighborhood based officers each supervising some of the highest risk offenders in Linn County. HRU has two officers working in Federal Joint Task Forces - Drug Enforcement Agency (DEA) and the FBI "Safe Streets" initiative. HRU also has one officer assisting the Department of Criminal Investigations (DCI) on a part-time basis. HRU has continued to participate in several collaborative efforts with local law enforcement including intelligence sharing, search and arrest warrant execution, and fugitive apprehension.

⇒ Residential/Furlough Checks:	474
⇒ Probation/Parole Checks:	3,887
⇒ Arrest Probation/Parole Warrants:	241
⇒ Arrest Probation/Parole Violations:	381
⇒ Arrest Absconders:	92
⇒ New Criminal Charges:	198

TOP 25

In response to a request by the US Attorney's Office for the Northern District of Iowa and as a part of their task force, "Project Safe Neighborhoods", the Sixth Judicial District Department of Correctional Services has established a list of approximately 25 offenders who present the greatest risk of violating their supervision. This has been a cooperative effort between the US Attorney's office, Linn County Attorney's Office and the Cedar Rapids Police Department. A list of objective criteria was developed to identify those offenders currently on supervision that have a lengthy history of criminal behavior focusing on violence, drugs, and/or weapon offenses.

Additionally, placement on the Matrix is also a deciding factor. Once identified, these individuals will be placed on intensive supervision to an agent in the High Risk Unit. The list is provided to local Law Enforcement who assists with monitoring of their activities. A zero tolerance approach is taken in response to violations. After immediate placement in jail for violations, a recommendation to residential, violators program, or revocation to jail or prison is the next step.

⇒ New Admissions:	21
⇒ Closures:	25
⇒ Active on 6/30/13:	15
⇒ Offenders Served:	39

Program/Treatment Services Overview – continued

ELECTRONIC MONITORING

Electronic monitoring equipment is used to augment supervision of offenders who require daily monitoring of their activities or are required by law to be monitored by this system. There are three different types: RF (radio frequency), VICAP (Video Information Capture) and the GPS (Global Positioning System).

The RF unit consists of an ankle bracelet transmitter and a receiver that attaches to the offender's home telephone service. The system provides the supervising agent a daily report of the offender's arrival and departure at their authorized residence as well as any curfew non-compliance.

The VICAP system is a deep-lung alcohol testing system using the latest fuel cell technology to report actual blood alcohol concentrations. VICAP consists of a handheld Breath Alcohol Tester to measure alcohol concentrations, and a digital camera to send digitized tests results and participant facial images (for verification that the offender being monitored is the one providing the sample) to a remote monitoring center. The VICAP system is unique in that it is a supervised test through the use of a streaming video provided from the digital camera connected to the monitoring center via the participant's phone line.

The GPS unit contains an ankle bracelet transmitter. The unit is called a WMTD (wearable miniature tracking device). The GPS system uses 24 satellites provided by the Department of Defense. The WMTD transmits a signal to three of these satellites, which allows the supervising agent to monitor the offender's activities and movements 24 hours a day through a secured internet site. The WMTD reverts to cell tower coverage to allow uninterrupted tracking due to satellite signal experiencing interference when the WMTD is indoors. With the legislative revisions to Chapter 692A SOR, the level of Electronic Monitoring and GPS for sex offenders continues to be determined through a comprehensive risk assessment approach.

<u>New Admissions</u>	
⇒ GPS	90
⇒ GPS- Cellular	2
⇒ Radio Frequency	13
⇒ Video Display	10
⇒ Voice Verification	0
⇒ Federal Home Confinement	15
TOTAL	130

BATTERER'S EDUCATION PROGRAM (BEP)

Batterer's Education Programming (BEP) is provided for individuals who are convicted of a Domestic Assault within the Sixth Judicial District. Historically, the Duluth education curriculum was the only curriculum that was used for BEP. However, with collaboration with Dr. Erika Lawrence and her team of research assistants from the University of Iowa a new curriculum was developed for this population. The name of this curriculum is ACTV (Achieving Change Through Value-Based Behavior). Within the Sixth District we currently have groups that are utilizing both curriculums. Programming begins with an intake and orientation session and then participants participate in twenty-four weeks of educational curriculum. Two trained co-facilitators, conduct the groups.

In the Duluth curriculum, the groups focus on power and control issues in relationships and use videotaped vignettes, structured discussion, and homework assignments. In the ACTV curriculum, the approach is using components of Acceptance and Commitment Therapy. The goal is to assist offenders in defining their true values and working with them as they move toward a life consistent with their values. This program is a collaborative effort between Community Corrections Improvement Association (CCIA) and the Sixth Judicial District Department of Correctional Services.

Program/Treatment Services Overview – continued

We also provide groups for women ordered to complete BEP, using the Moving On Curriculum. All participants complete an intake and orientation, followed by 24 weekly two-hour group sessions. There are female DCS staff trained to facilitate the groups on work time.

⇒ New Admissions:	320
⇒ Closures:	275
⇒ Active on 6/30/13:	559
⇒ Offenders Served:	856

WORKFORCE DEVELOPMENT

Workforce Development efforts began in December 1998, when the Southern Advisory Committee of our Department decided to launch an agency-wide employment continuum for offenders. Since that time new employment programs were created and implemented in the Sixth Judicial District of Iowa. Additionally, more assessment tools and certificates are being utilized to improve job fit and employability. Briefly some of these programs are:

- **Long-lasting Employment and Retention Network (LEARN):** This program is designed with the goal of assisting offenders in obtaining permanent full-time employment that matches each individuals' interest areas, aptitudes, career goals and criminogenic needs. It is likely the obtained job will be satisfying to the offender and therefore they will be productive and more likely to retain the job.
- **Job Coaching and Retention:** This is a service provided for offenders with chronic employment problems characterized by losing jobs, job-hopping, long-term under-employment, and poor work performance. Individual attention is given to the offender including the use of numerous specialized assessment instruments as well as counseling in an effort to help them attain and maintain appropriate meaningful employment. This new service has been quite successful with the population it serves.
- **Employability:** Workforce staff is utilizing evidence-based certificates and assessments to improve employability for offenders. Some of these certificates target the offender's ability to process and locate information, reading comprehension, and math skills. Furthermore, the Certificate of Offender Rehabilitation and Employability was developed to help employers better identify offenders that are ready to work and making strides towards reintegration. Other assessments measures key personality traits and behaviors that are crucial to successful job performance.
- **Mentoring:** This is an effort to match offenders with appropriate role models in the community.
- **Community Service/Service Learning:** Community service projects are selected for their content both in terms of what the project itself can offer the offender in service learning, and what the offender and the community partners can derive in understanding and appreciating on another as individuals. Also, the offender can gain a sense of connection to the community and pride in being a part of a restorative effort.
- **Community Partners:** The workforce development program strives to develop partnerships with other agencies and employers in an effort to promote employment.
- **Job fairs:** Workforce staff coaches and provides feedback to offenders from start to finish with local job fairs. Workforce staff prepares offenders for job fairs by assisting offenders with completing applications, resumes, and the development of soft skills, networking, and mock interviews. Additionally, workforce staff uses job fairs as an opportunity to meet local employers and educate employers on the benefits of hiring offenders.

While workforce development remains a valued endeavor, we have been in a state of transition regarding available services as we seek to optimize resource allocation throughout the district. Though services were reduced in some areas of workforce development in the past year staff remain dedicated to utilizing available services both within and external to district services to ensure high levels of meaningful employment for our clients.

Program/Treatment Services Overview – continued

RESTORATIVE JUSTICE

Restorative justice is a philosophy based on the belief that when offenders commit crime they injure the victims, the community, their families, and themselves. It supports and serves the victim as central to the justice process and elevates the role of crime victims and communities in the process of holding offenders accountable for their behavior, while offering offenders the opportunity to directly make amends to the people and community they violated.

It is a philosophy of healing, reintegration and community building. It puts the "community" back into corrections. It challenges us to create partnerships to get ahead of crime.

Practices which incorporate restorative principles help repair the harm to relationships caused by acts of wrongdoing. They are focused on building offender accountability to the victim and community to repair harm (to the extent possible), and develop offender competencies targeted at issues underpinning their criminal behavior so they learn something in the process that works to prevent another victimization. Examples of practices that build upon restorative principles are: Family Group Conferencing; Family Team Meetings; Circles of Support and Accountability; Talking Stick Circle; Accountability Boards; Restorative Community Service (statistics recorded separately); Victim Offender Mediation; Victim Impact class; Adult Mentoring Program.

ADULT MENTORING PROGRAM

The Adult Mentoring Program is offered to offenders on active supervision and includes 1:1 mentoring as well as Circles of Support and Accountability (CSA). Mentors are trained community volunteers that are matched with offenders and help develop a positive, pro-social support system. In addition, mentors may provide assistance in the areas of education, employment, financial literacy and housing.

- 40 mentor matches in Linn County
- 18 mentor matches in Johnson County
- 65 active mentors involved in matches throughout the year
- 42 offenders/mentees actively matched throughout the year
- 6 mentor applications pending
- 2 mentee applications pending
- 33 new mentors trained this year
- 22 community events/presentations

Circles of Support and Accountability (CSA) are a group mentoring service offered to offenders on active supervision. A CSA matches trained volunteers from the community (usually 5-7) with an offender to help build positive pro-social relationships and address the many challenges offenders face as they re-enter the community. Circle members and the offender meet regularly (1-2 times per month) using a "circle" dialogue process to build trust, provide support, and to develop and pursue an action plan that moves towards accountability and responsible living. Core areas that are addressed include residence, education/employment, social supports and treatment/transportation.

- 8 active CSA's in Linn County
- 3 active CSA's in Johnson County
- 38 active CSA volunteers- 29 in Linn County; 9 in Johnson County

In 2010, the 6th District received a Second Chance Re-Entry grant for the Adult Mentoring Program that was instrumental in program growth. That grant ended March 31, 2013.

Program/Treatment Services Overview – continued

VICTIM SERVICES PROGRAM

From July 1, 2012 to June 30, 2013 services were delivered to 58 new victims and 80 contacts were made with victims for ongoing services. Contacts are by phone, mail, or in person. A phone call may last anywhere from 10 to 30 minutes or more depending on the crisis stage of the victim and the needs of the victim. Victims are met in person either in the advocate's office or at a neutral location. All contacts are followed up by phone or by letter. One victim may have several contacts with the Advocate.

The Victim Advocate also sends out notification letters to registered victims when an offender from an Institution is expected to arrive in one of the facilities in the district. Upon request from victims, the Advocate is able to register them in the ICON database under Record Alert as registered victims.

This process gives probation officers the opportunity to know who the victim is and to know they are receiving services from this agency. A confidential comments screen was also developed for probation officers to enter notes from victims in a safe and confidential way, separate from the offenders generic notes.

As part of advocating for victims, the Victim Advocate has also been involved in individual meetings with offenders to help them understand victim needs and their responsibility to victims.

Many offenders have had their own victimization issues that need to be addressed and are then given services or referrals to proper agencies.

Victim Impact Awareness Class:

Between July 2012 through June 2013, Linn County has provided four (4) Victim Impact classes for offenders and a minimum of six (6) panel presentations were made (see table below for breakdown).

Forty-seven (47) victims, survivors, victim advocates, law enforcement and community members have served on panels. Offenders complete projects which benefits victims to reinforce their responsibility to help repair the harm. They help with projects during Victims' Rights Week in April of each year by making ribbons, donating time to help set up tables and chairs for events, and by being present to support the events.

	Victim Impact Classes/Panels Held
Johnson County Sex Offender Unit	0
Linn County Sex Offender Unit	0
Linn County Impact Classes	1
Sixth District Staff Training	1
Clarinda Correctional Facility	0
Anamosa State Penitentiary	4
Central office for training of VIC facilitators	0
*Criminal Justice Classes	0
TOTAL	6

* Presentation to college students

Program/Treatment Services Overview – continued

Victim Advisory Committee:

The Victim Advisory Committee in Linn County provides a yearly fundraiser, which raises money for victim needs, such as travel to court, educational conferences, self-help books, child care while they attend court or sit on panels, and to provide healing baskets for victims. In 2013, the committee provided one chili fundraiser. The VAB donated to Waypoint Services, money for cab fares for victims of domestic violence. The committee completed the majority of the victim garden by putting in a ribbon shape walkway and purchasing the center monument with the name of the garden on one side (The Leah Wara Memorial Garden) and the quote for (Fulfilling The Promise To All Victims) on the other side. The garden had several donations to help with the garden from community businesses. The homicide victims bricks that were along the river and in the flood of 2008 were brought over from the original place and put into the new garden. The second Victim Rights Week activities for opening ceremony were held at the Department of Corrections. Homicide survivors put the yearly memorial crosses in the garden. The dedication of the garden was provided.

Several members of the committee continue to sit on victim impact panels. As a result, Anamosa Prison Inmates continue a SAVE group (seriously acknowledging victim's emotions). The Inmates also invite victim panelist into the prison during Victim Rights Week to honor and thank them for sitting on panels. One inmate continues to paint portraits for homicide victims and another who does woodwork, donates items like a clock or chest that are then donated to the VAB to auction off to provide extra funds for the victim fund. This year chest was rallied off. The VAB made \$350 for the chest.

In 2012, the Linn County board lost four members, but also gained a couple new people as well. They are working to reorganize, look at any goals not completed in past months to work on in 2013.

The Victim Advisory Committee in Johnson County area also developed a Victim Memorial Garden on a smaller scale at the Johnson County facility in Coralville.

Johnson Co. Victim Advisory Board members are also reorganizing. They are working to recruit more members for their committee as well. They continue to donate time and energy to helping to provide meals at the community's soup kitchen for people in need.

Victim/Offender Dialog (VOD):

The Victim Offender Dialog Program offers victims the opportunity to meet with the offender face-to-face in a safe setting with a trained volunteer facilitator.

The use of Dialog gives voice to both victim and offender and leaves open more opportunity for change. There were two offenders who were interested in making amends, however the victims in these cases were not interested which is always their choice. The offenders were offered the opportunity to write apology letters and they were filed in the Advocate office should the victim ever want them. This is still a good opportunity for offenders to try to do the right thing by a sincere apology.

Training:

In promoting victim sensitive practices within corrections and the community, trainings continue as new staff are hired. The victim services program also is responsible for the implementation of the Staff Victimization and Support Services Team. Training was completed with staff and management on Bullying in the workplace to sensitize and bring awareness of staff victimization.

The Victim Advocate continues to be instrumental during National Crime Victims' Rights Week, networking with other agencies to bring in a national speaker to promote understanding of victim issues and victim sensitive practices. Activities were also supported by other staff, along with offenders.

Program/Treatment Services Overview – continued

Community & Restorative Justice:

The Victim Advisory Boards are made up of victim survivors and other persons from victim service programs. Victim Impact Panels and presentations from the Victim advocate are reflected below. The program has several volunteers; however some are inactive depending on schedules and activities. Victim contacts are ongoing year round.

Contacts made with Victims	138
Trainings	1
Program Volunteers	32
Victim Advisory Board Members	
o Linn County	12
o Johnson County	5
Victim Impact Panel Presentations	5
Victim Offender Dialog	0

Victim Memorial Garden

This has been a productive year for the development of the memorial garden located on the Sixth Judicial District Department of Correctional Services complex at 951 29th Ave SW, Cedar Rapids. Through CCIA, the victim fund and community donations, the garden has a gazebo, the ribbon walkway with an angel and monument to come. A bridge has just been added. The bricks from the old memorial site which was flooded had been moved over to the Sixth District complex in Linn County and will be added to the garden.

The Victim Advisory Board members have plans to add photos and information about the garden on the victim website located within the Department's web site. The clients who need community service will help to maintain the garden. The garden was also named after a homicide victim, Leah Wara, who was killed in 1989.

The second opening ceremony for 2013 Victims Rights Week was held at the Sixth Judicial District Department of Correctional Services complex.

RESIDENTIAL FACILITIES:

The District has three residential facilities that offer the highest structure and control and are therefore designed for the higher-risk offender who requires such enhanced supervision. The residential facilities also offer short-term placements for offenders under supervision in the community in an effort to "stabilize" the offender, thus avoiding possible revocation. Residential facilities in the Sixth Judicial District provide housing for male and female offenders on Probation, Parole, Work Release from an adult institution, and Federal offenders.

Gerald R. Hinzman Center (capacity – 86) in Linn County provides services to male and female offenders. Male offenders include: Probationers and Federal clients. Women offenders include: Work Releasees, 2nd and 3rd Offense drunk drivers, Probationers, Parolees and Federal clients.

Hope House (capacity – 58) in Johnson County provides services for male Work Releasees, 2nd and 3rd Offense drunk drivers, and Probationers as ordered by District Court.

Program/Treatment Services Overview – continued

Lary A. Nelson Center (capacity - 93) in Linn County provides services for male Work Releasees who are returning to the community from a State institution as ordered by the Iowa Board of Parole, and male 2nd and 3rd Offense drunk drivers as ordered by District Court, and also accepts short-term placements of Parolees.

Programming in the Facilities

Each facility resident is involved in a treatment program designed for that individual. The goal is to enhance that resident's ability to be a success. Some programs, such as money management and employment/education, have been mentioned previously.

Accountability is stressed and enforced at a high standard. In addition, there are numerous program and treatment opportunities for each resident based upon their assessed need including:

- Education – GED, High School, College opportunities
- Sex Offender Programming
- Substance Abuse Counseling and Treatment in both individual and group settings
- In-house AA
- Cognitive Restructuring
- Mental Health Counseling/Intervention and referral
- Batterer's Education Program
- Recreational activities
- Community Service opportunities
- Job Development

⇒ New Admissions:	531
⇒ Closures:	466
⇒ Active on 6/30/13:	241
⇒ Offenders Served:	752

NOTE: Total include R, VC & VT beds

All residents are required to surrender their earnings, which were disbursed as follows:

- Court costs, restitution: \$ 99,165.63
- Facility rent, fees, etc.: \$ 1,078,684.58

ANCHOR CENTER **System Overview**

In recent years, the Criminal Justice System has seen a significant increase in the number of individuals that have a diagnosed mental health disorder. According to a report produced in 1999 by the Bureau of Justice Statistics it was stated that 16% of individuals in our national criminal justice system have a diagnosed mental health disorder. However, by 2005, it stated that approximately 50% of the individuals in our prisons and jails have a mental health disorder (James & Glaze, 2006). In addition, of that number, 75% also have a diagnosed substance use disorder.

As of December 31, 2006, 3,535 of the 8,838 individuals incarcerated by the Iowa Department of Corrections had a diagnosed mental health disorder (Mentally Ill Offenders in Iowa's Prison System: Update, 2007). More specifically, 60% of incarcerated women and 31% of incarcerated males comprised this population. In addition, 47.2% of the individuals meeting the criteria for one mental health disorder diagnosis also met the criteria for at least one additional diagnosis such as a substance use disorder (Iowa Department of Corrections, 2006).

Program/Treatment Services Overview – continued

The Chief Judge of the Iowa Supreme Court, Chief District Court Judges, and State Corrections Administrators have seen the need, and lack of, mental health services for the correctional population. Therefore, efforts have been made within the Iowa Department of Corrections to address the needs of these individuals. Institutions have developed critical care and special needs units within the prisons to provide more specific and individualized treatment settings to these inmates. The Department has also begun to work with these individuals before release and re-entry into their communities through re-entry programs.

The number of individuals with mental health disorders being released on parole into the correctional services districts ranges from 22.5% and 36.0%. Various districts have set up community based programs to address the needs of these individuals. However, very few residential settings are available to these individuals. The ANCHOR Center aims to fill this critical gap in services.

Background

To serve the growing population of offenders with serious mental illness, the Sixth District developed the idea of building a residential mental health facility. By creating this unique and innovative facility, the treatment needs of these individuals would be addressed, while also providing the needed security and supervision. With the need and the vision in place, the legislature was the next step.

In the 2006 Iowa Legislative session the Sixth Judicial District Department of Correctional Services was allocated \$2 million dollars to be dispersed in two installments of \$1 million in the 2006 fiscal year and \$1 million in the 2007 fiscal year to build the mental health residential facility. This facility was to be built on the Correctional Services Complex in Cedar Rapids, with the objective of serving individuals with mental health needs under the supervision of the Sixth Judicial District.

The Client Services Advisory Committee was instrumental in developing the physical plan for the facility as well as initial planning for the type of programming to be provided. The Committee met monthly with sub-committee work as necessary. The physical plans included heavy consultation of David Sine and James Hunt's "Design Guide for the Built Environment of Behavioral Health Facilities," which specifically included consideration of various hardware and furniture that has been developed for this type of facility. In addition to helping with the physical plans for the ANCHOR Center, the committee identified the need for ANCHOR Center to function as an assessment and evaluation unit where each client's needs would be identified and serve as the basis for a comprehensive, individualized treatment plan aimed to facilitate re-integration to the community. By providing a structured environment to promote stability and evaluation with timely referral to community partners ANCHOR Center was devised to be a compliment to the existing service structure rather than supplant any existing services.

A residential facility of this type is very uncommon, so much that it may be the first of its kind. With that, a staffing pattern that includes non-traditional residential correctional staff is essential to its success. Intensive services within the facility are designed to adequately assess and evaluate the variety of needs that these clients have, but then to implement and connect them to community resources that are going to enhance their ability to be successful. The facility will also have to accommodate diverse and sometimes significant medical needs of this population.

Finally, adequate and appropriate staff to client ratios is essential, but so is the need to have well trained staff. Staff are trained to deal with this population from a clinical standpoint as well as a correctional standpoint. These two components work together as a team to provide treatment and supervision. With that, an intensive training protocol will need to be provided initially as well as on an on-going basis.

Program/Treatment Services Overview – continued

Current Status

ANCHOR Center has been operational on a field/outpatient basis for several years. Programs provided at the facility are outlined in following sections. At the end of the current fiscal year we learned there would be additional funding to open ANCHOR Center residential services. We anticipate opening the residential facility in FY 14 though there will be some challenges to optimize allocated resources and achieve the level of programming initially envisioned by the Client Services Committee.



The ANCHOR Center in Cedar Rapids, was completed in November, 2008

In general, the criminal justice system will continue to struggle with how to appropriately work with these individuals. The Sixth District Department of Correctional Services hopes the ANCHOR Center can become a model to other districts in Iowa, as well as to the nation, as an effective program for clients with mental health and/or substance use disorders within the criminal justice system.

SUBSTANCE ABUSE EVALUATION PROGRAM (SAEP)

The Substance Abuse Evaluation Program was developed to address the need of many clients who are involved in the criminal justice system and are required by the court to get a substance abuse evaluation. Iowa Code requires that all individuals charged with Operating While Intoxicated (OWI) complete a substance abuse evaluation. These evaluations must be completed by a licensed substance abuse provider. In 1999, the Sixth Judicial District Department of Correctional Services was the first correctional department in the state of Iowa to become a licensed provider. In 2009, that program became part of the ANCHOR Center correctional outpatient services licensure.

Through this program, individuals who have been charged with an OWI meet with the SAEP staff to complete a substance abuse evaluation. The results and recommendations resulting from the evaluation are then submitted to the court to work to assist these individual's in gaining the appropriate education/treatment that is needed. The evaluation results are also, with a release of confidential information, submitted to treatment agencies within the community for services. The individual is then responsible for the completion of the recommended treatment.

366 SAEP assessments were completed

TREATMENT ACCOUNTABILITY FOR SAFER COMMUNITIES (TASC)

The Treatment and Accountability for Safe Communities program began in 1987 as part of a five year federally funded grant. The TASC program is staffed by three certified alcohol and drug counselors who are Department of Correctional Services' employees. The TASC staff performs a substance abuse evaluation for clients who are currently under correctional supervision. From the evaluation, clients may either be referred to the Strategies for Self Improvement and Change program or to community treatment agencies for further treatment if deemed appropriate. The client is then responsible for attending and completing the treatment that is recommended as part of their correctional supervision.

224 TASC evaluations were completed

Program/Treatment Services Overview – continued

MENTAL HEALTH JAIL DIVERSION/PRETRIAL RELEASE

The Mental Health Pretrial Release Program is designed for defendants who reside in Linn County. This program was established as a collaborative effort with Linn County Mental Health and Disability Services to provide jail diversion and reentry services for people who have been diagnosed or thought to have a mental illness.

Potential defendants must meet the following criteria to participate in the program:

- Been arrested for felony or aggravated misdemeanor offense(s), although a serious misdemeanor assaultive offense may be considered.
- Consented to and completed a Pretrial Interview; scoring in the -1 to 4 range on the interview (those who score in that range are currently recommended to be held on cash bond or released with supervision to the Department of Correctional Services).
- Agree to participate in all aspects of the program, and they must agree to sign all applicable releases of information.

The Department of Correctional Services Pretrial Interviewers, the Judiciary, and the Linn County Jail staff will refer potential candidates for the program. The Department of Correctional Services assigns a Probation/Parole Officer (PPO) to this program that will:

- Contact the referred individuals to determine their interest in participating in the program.
- Conduct initial mental health screenings on the referred defendants, using the MHS (mental health screening instrument).
- Have defendant sign all applicable releases of information.
- Schedule the defendant for a full mental health evaluation to be conducted by the Abbe Center for Community Mental Health, following consultation with the program supervisor or designee.
- Act as the primary case manager/pretrial officer for the defendant until their final Court disposition or until the defendant has attained a level of stability that a lesser supervision is approved.
- Review needs identified by the Abbe Center with the defendant and assist the defendant in addressing those needs.
- Oversee and enforce defendant's compliance with the Department of Correctional Services Pretrial Release agreement and notify the Court of the defendant's non-compliance with any conditions of release. (A special condition of the pretrial release agreement will be that the defendant be required to make their residence accessible for home visits.)

Released from jail to the program:	36
Successfully discharged:	27
Revoked and returned to jail:	8
Mental Health Assessments completed:	65
Mental Health Evaluations completed:	58
Jail inmates who received services:	21
TOTAL number of jail days saved in FY'13: 10,249	

Program/Treatment Services Overview – continued

DRUG TREATMENT COURT (DTC)

The Drug Treatment Court was established in 2007 within the Sixth Judicial District from funding appropriated by the state legislature. Drug Courts were originally established in the United States in 1989; later in 1997 Mental Health courts were also established within the United States. Both of these are specialty courts designed to address the unique needs of clients with either substance use or mental health needs. However, the criminal justice system has many individuals who have co-occurring disorders; those individuals with both substance use and mental health disorders. While many specialty courts attempt to screen individuals for both disorders, they also attempt to eliminate individuals who have both disorders.

The Sixth Judicial District Drug Treatment Court Program is designed to provide intensive community supervision to probation clients who would be sent to prison if the program did not exist. The clients served in this program are those who have abuse and dependency issues related to one or more substances, and who are sentenced to probation on an Aggravated Misdemeanor or Felony charge. Many of the clients served in this program also have mental health issues of varying levels of severity.

Through supervision in the Drug Treatment Court Program, and through use of restorative justice principles, individuals are encouraged to invest in their community. They are encouraged to create ties to pro-social people and activities that will provide them the support needed to avoid relapse and the behaviors that lead to recidivism. Individuals are provided with substance abuse treatment and are also assisted in accessing mental health services, obtaining safe and stable housing, and obtaining employment. By investing in the community and creating these ties to supportive services, individuals involved in the Drug Treatment Court Program are better equipped to be self-sufficient and able to maintain the positive changes they create even after community supervision is completed.

The Drug Treatment Court Team attends regular court hearings where they are expected to update the Drug Treatment Court Team and their peers on their progress towards their case plan goals. The team consists of the judge, prosecuting attorney, defense attorney, drug treatment court coordinator, drug treatment court supervising agent, community substance abuse agency representative, and a mental health professional. The team rewards positive behavior with incentives, such as certificates, small prizes, and positive feedback from the judge. Negative behavior earns a sanction from the team, which could include loss of a privilege, an assignment of some sort, or jail time. In addition to court appearances, the client is expected to see their probation officer, attend all recommended substance abuse treatment, and complete random drug and alcohol testing as requested.

One unique aspect of the Sixth District's Drug Treatment Court is that the program addresses co-occurring disorders. According to the Substance Abuse and Mental Health Services Administration (SAMHSA), which is a major contributor of research and evaluation within the substance abuse and mental health arenas, integrated treatment for substance abuse and mental health disorders is an evidenced based practice and proven to be more effective than independently or paralleled treatment of these disorders.

An additional component of the Drug Treatment Court Program is a result of a federal enhancement grant from BJA and SAMHSA which funds employment services for the clients. Due to this additional funding, Goodwill Employment Services also is a part of the Drug Treatment Court team at this time. The clients have been able to receive individual job seeking assistance and job coaching, job classes, and assistance with job seeking through incentives such as bus passes and gift cards to purchase

Program/Treatment Services Overview – continued

interview clothes or equipment for work. This was a time limited grant, and funded these services through September 2013. At this time, community resources are being explored in order to continue to offer these opportunities to the clients.

The Drug Treatment Court program is a phase-based program, consisting of 5 phases. The minimum amount of time needed to complete all 5 phases is 12 months, and many individuals will likely require more time than this to complete the program. The phases begin with assessment and evaluation, referral for appropriate level of service, and case plan development. As an individual progresses through the phases, based on their individual case plan, the requirements and expectations are also increased. Failure to meet the outlined expectations will be addressed during hearings with a variety of sanctions, which could include anything from volunteer hours to jail days.

The Linn County Drug Treatment Court Program accepted a total of 40 clients between July 1, 2012 and June 30, 2013, in addition to the 37 clients already involved in the program as of July 1, 2012. During those same dates, 32 clients were revoked and required to serve their suspended prison sentence. Twelve clients completed the first 5 phases of the Drug Treatment Court Program and were in the Aftercare Supervision phase as of July 1, 2013. Additionally, 7 clients discharged all probation supervision successfully between the dates of July 1, 2012 and June 30, 2013.

The Johnson County Drug Treatment Court Program accepted a total of 14 clients between July 1, 2012 and June 30, 2013, in addition to the 23 clients already involved in the program as of July 1, 2012. During that same time frame, 10 clients were revoked and required to serve their suspended prison sentence. Eight clients completed the first 5 phases of the program and were in the Aftercare Supervision Phase as of July 1, 2013, and 4 additional clients discharged all probation supervision successfully between the dates of July 1, 2012 and June 30, 2013.

	Linn County DTC	Johnson County DTC
Clients Active as of 6/30/13	37	23
Clients Admitted 7/1/12 to 6/30/13	40	14
Number of Clients Revoked 7/1/12 to 6/30/13	32	10
Clients Graduated to Aftercare as of 6/30/13	12	8
Clients Completing Program 7/1/12 to 6/30/13	7	4

During the last year, participants in the Drug Treatment Court Program have been assisted in accessing a variety of community resources to address their individual needs. Many of these resources addressed their substance abuse treatment, mental health, or living situations. Between the two counties, there have been 20 placements in residential substance abuse treatment between July 1, 2012 and June 30, 2013. During that same timeframe, there have also been 5 placements in a substance abuse halfway house, 4 in community corrections halfway house, and 18 in community based halfway house.. Other community referrals include those to mental health treatment, transportation assistance, medical treatment facilities, domestic violence intervention counseling, family counseling services, and parenting groups.

Program/Treatment Services Overview – continued

MENTAL HEALTH REENTRY PROGRAM

The Mental Health Reentry Program was established in 2001 as a collaborative effort with Linn County Mental Health and Developmental Disability Services (MHDD) and the Sixth Judicial District to provide jail diversion and reentry services for people who have been diagnosed or thought to have a mental illness and who are involved in the criminal justice system. The Mental Health Reentry Program expanded to Johnson County in 2008 due to the successful outcomes that were being achieved. The program is designed to provide a high level of service and intensive supervision for individuals returning from prison who are on parole and have been diagnosed with chronic mental illness. Participants must have a diagnosis listed in the Diagnostic and Statistical Manual in the Axis I category. Common diagnoses seen in this program include schizophrenia and other psychotic disorders, mood disorders (depression, anxiety, panic), and bipolar disorder. Of those clients admitted to the program, many also have had a significant history of substance use and/or abuse.

During the critical period of transition from the institution back to the community, MHRP staff are sensitive to the special needs of these clients and are focused on making appropriate referrals and monitoring follow through and compliance with treatment objectives. Without extra services, supervision, and support, clients with co-occurring disorders often fall through the cracks of helping agencies and the criminal justice system. They can get caught in the complexities of both the treatment delivery system and the criminal justice system. Therefore, this program is designed to provide specialized supervision, partnered with a connection to community resources that works to positively impact the successful re-integration of clients with co-occurring disorders into their communities.

Over the course of the years, funding for these programs has been impacted. During the course of the fiscal year the State of Iowa, specifically targeting the 6th and 1st Judicial Districts, sought Congressional Earmark funding for Transitional Mental Health Reentry. We were awarded this funding which includes funding for a specialized case manager and psychiatric services. The funding began on July 1, 2011.

⇒ New Admissions:	80
⇒ Closures:	38
⇒ Active on 6/30/13:	105
⇒ Offenders Served:	138

Community Accountability Board

The Community Accountability Board (CAB) is a model of community collaboration consistent with the District's restorative justice philosophy. CAB was initially only a component of the Mental Health Reentry Program, however due to successful outcomes, CAB was expanded to include other parole and probation clients who have a mental health diagnosis and the need for connection to community resources.

The CAB was originally only an intervention provided in Linn County, but has now been expanded to Johnson County. The CAB assists our clients in reintegrating into their respective communities. Members of the CAB represent agencies in the following areas: mental health treatment; family and individual therapy; vocational services; education; employment; law enforcement; mental health advocacy; and neighborhood and faith-based organizational support.

There are two separate boards, one in Linn County and one in Johnson County, each meets monthly for a two hour session. Each board consists of approximately ten members. Three clients are generally seen at each CAB meeting. Clients are in need of extra support and assistance, especially those in the early stages of the program, are seen monthly by the CAB. Clients making satisfactory progress in the program are generally seen by the CAB every 2-3 months. CAB members make their expertise, experience and support available to the clients they see in these meetings. Many CAB members also make themselves available to clients outside the board meeting, via phone contact or visits at their respective agencies. This "personal touch" is especially valuable to mental health clients, who often experience difficulty accessing and following through with helping services. It also has the effect of encouraging clients to utilize these same services after they complete their involvement with correctional supervision.

STAFF/OFFENDER COMMUNITY SERVICE/WORK CREWS

Community Service Program

Guiding Principles:

The Community Service Program provides both individual community service placements as well as group community service opportunities. The program embraces the following guiding principles:

- Individual community service placements provide meaningful service to non-profit entities.
- Group community service projects involve staff and/or placement staff working with clients to complete projects vital to community enrichment.
- Community service builds healthy relationships in the community and promotes positive staff/client relationships.
- Community service promotes healthy alternative leisure time activities.
- Community service models appropriate work-related behaviors.
- Community service offers skill-building opportunities, vocational exploration opportunities and promotes self-confidence in these endeavors.

Types of Community Service:

During fiscal year 2013 community service crews assisted many local agencies with needed services. The following are examples of the activities the work crews participated in:

- Local nonprofits
 - Habitat for Humanity Restore - crews help move and organize donations;
 - Green Square Meals —crews prepare and serve food along with cleaning and stocking shelves
 - Humane Society—cleaning up brush on vacant lot;
 - Iowa City Bike Library—fixing and restoring bikes for children;
 - North Liberty and Coralville Food Pantries – deliver food, stock shelves and cleaning;
 - Mayors Youth Empowerment Program (MYEP) facility – moved furniture and painted walls.
- Festivals — crews assisted with the set-up and break down for local festivals. Some of these festivals included:
 - Fry Fest
 - Summer of Arts
 - Hog Wild Days
 - Solon Beef Days
 - Hoover Fest
 - Jones County Fair
 - Tiffifest
 - Martin Luther King Day
 - Native PowWow
 - Jazz Festival

Staff/Offender Community Service/Work Crews – continued

Statistics:

A quick overview of community service hours completed is below:

Hope House Courtesy Community Service	506
Hope House Open Work	12
Hope House Program Requirement	71
Johnson Batterer's Education Program	68
Johnson Community Service as Assigned	100
Johnson Community Service Restitution	2,377
* Johnson Community Service Sentencing	1,779
+Johnson County Work Crew hours (9/1/12 – 8/31/13)	7,015
Number of project completed (9/1/12 – 8/31/13)	377
JOHNSON COUNTY =	11,928 hours
* Linn Community Service Sentencing	1,140
+ Linn County Work Crew hours (9/1/12 – 8/31/13)	3,265
Number of projects completed (9/1/12 – 8/31/13)	116
LINN COUNTY =	4,405 hours
Tama Community Service as Assigned	1,068
Tama Community Service Restitution	1,806
* Tama Community Service Sentencing	144
+ Tama County Work Crew hours (9/1/12 – 8/31/13)	1,366
Number of projects completed (9/1/12 – 8/31/13)	104
TAMA COUNTY =	4,384 hours
TOTAL FOR DISTRICT =	20,717 HOURS

According to the Code of Iowa, community service is to be calculated by the federal minimum wage, which is \$7.25. Therefore, \$150,198.25 in value was given back to the courts and/or community via community service.

* **Hours include self-supervised probationers**

+ **Includes hours residential offenders completed while supervised by AmeriCorps Members**

FINANCIAL INFORMATION

Expenditure Report/Expenditures by Cost Center

EXPENDITURE DETAIL	
Personnel Services	15,530,080.12
Travel & Subsistence	84,762.27
Supplies	544,961.61
Contractual Services	722,342.27
Equipment & Repairs	930,559.04
Claims & Misc.	254,636.72
Licenses, Permits, & Refunds	0.00
State Aid	0.00
Plant Improvement	0.00
Total Expenditures	\$18,067,342.03

Expenditures by Major Cost Center/Special Projects by Revenue Source

TOTAL EXPENDITURES		
1110	ADMINISTRATION	2,053,888.90
1140	PROBATION/PAROLE	6,124,069.39
1150	COMMUNITY SERVICE	199,655.10
1160	RESIDENTIAL	6,083,118.88
1160	MENTAL HEALTH FACILITY	1,119,237.80
1210	DRUG COURT	587,235.77
1240	DAY PROGRAM	93,964.90
1250	EDUCATION PROGRAM	83,742.54
1260	SEX OFFENDER	888,686.82
1270	DOMESTIC VIOLENCE/BEP	63,610.08
1310	INTENSIVE SUPERVISION	377,239.88
1322	MENTAL HEALTH RE-ENTRY COURT	83,840.39
1332	NEIGHBORHOOD BASED SUPERVISION	309,051.58
TOTAL		\$18,067,342.03

Financial Information – continued

Revenue Detail

REVENUE DETAIL		
State Allocations		14,095,408.00
Taxes		
Taxes		
Less Refunds		
Total Net Taxes		0.00
Receipts From Other Entities		
Federal Support	291,589.07	
Local Governments	4,167.00	
Other States		
Intra-State reimbursements	533,736.75	
Total Receipts From Other Entities		829,492.82
Interest, Dividends, Bonds & Loans		
Interest	9,029.95	
Dividends		
Bonds & Loans		
Total Interest, Dividends, Bonds, Loans		9,029.95
Fee, Licenses & Permits		
Fee, Licenses & Permits	823,842.06	
Less Refunds		
Net Fees, Licenses, & Permits		823,842.06
Refunds & Reimbursements		2,213,630.91
Sales, Rents & Services		
Sale of Real Estate		
Sale of Equipment & Salvage		
Rents & Leases		
Agricultural & Sales		
Liquor		
Other Sales & Services		
Total Sales, Rents & Services		0.00
Miscellaneous		
Unearned receipts		
Income Tax Check-offs		
Other	145,281.96	
Total Miscellaneous		145,281.96
Total Revenues		\$18,116,685.70

Financial Information – continued

Offender Fees Collected

REVENUE		TOTAL GF (POS)	TOTAL LOCAL FED OTHER	GRAND TOTAL
01	Balance Forward			
05	Appropriation	14,095,408.00		14,095,408.00
05	Salary Adjustment			
05	De-appropriation			
05	Re-Allocation			
05	Sex Offender Transfer			
05	Workers Compensation			
201	Federal Grants		291,589.07	291,589.07
202	Local Gov't (County Agreements)		4,167.00	4,167.00
204	Intra-State Transfers			
205	Federal Pass-Through (Federal Rent & Grants)		533,736.75	533,736.75
301	Interest		9,029.95	9,029.95
401	Enrollment Fees (Supervision Fees)		823,842.06	823,842.06
402	Fees & Licenses			
501	Miscellaneous Revenue (Residential Rent)		2,213,630.91	2,213,630.91
704	Other Revenue (Program Fees)		145,281.96	145,281.96
Total Revenue		\$14,095,408.00	\$4,021,277.70	\$18,116,685.70

Average Daily Costs:

Residential Cost Calculation:

\$6,083,118.88	Residential Expenditures
233.77 beds / 365 days = \$71.29 per day for Residential & Work Release	

Field Services Cost Calculation: (active as of 6/30/13)

Service	Total	Expenditures	Average Daily Cost
Pretrial Interviews	2,852	\$ 219,854.08	\$ 77.09
Presentence Investigations	799	\$ 808,989.57	\$ 1,012.50
PTR w/services	264	\$ 323,350.86	\$ 3.36
Low Risk	1,404	\$ 161,675.43	\$ 0.32
Probation/Parole	3,512	\$4,610,199.44	\$ 3.60
	TOTAL	\$6,124,069.38	

Program Costs Calculation: (active as of 6/30/13)

Program	Total	Expenditures	Average Daily Cost
Sex Offender	160	\$ 888,686.82	\$ 15.22
Batterer's Education	559	\$ 63,610.08	\$ 0.31
Drug Court	79	\$ 429,639.03	\$ 14.90
Mental Health Re-Entry	105	\$ 83,840.39	\$ 2.19
Intensive Supervision (ISP)	215	\$ 377,239.88	\$ 4.81

**Iowa Department of Corrections
FY 2013 Financial Status Report**

	Department Revised Budget	Actual Revenues and Expenditures	Percent (Actual of Budget)	
Resources Available				
05A	Appropriation	14,095,408.00	14,095,408.00	100.00%
201R	Federal Support	-	291,589.07	---
202R	Local Governments	-	4,167.00	---
205R	Reimbursement from Other Agencies	1,906,030.00	533,736.75	28.00%
301R	Interest	5,805.00	9,029.95	155.55%
401R	Fees, Licenses & Permits	683,555.00	823,842.06	120.52%
501R	Refunds & Reimbursements	1,151,271.00	2,213,630.91	192.28%
704R	Other	237,417.00	145,281.96	61.19%
Total Resources Available		18,079,486.00	18,116,685.70	100.18%
Funds Expended				
101	Personal Services-Salaries	16,011,796.00	15,530,080.12	96.99%
202	Personal Travel (In State)	15,000.00	13,341.65	88.94%
203	State Vehicle Operation	39,241.00	65,683.72	167.39%
205	Personal Travel (Out of State)	-	5,736.90	---
301	Office Supplies	43,056.00	55,565.34	129.05%
302	Facility Maintenance Supplies	14,836.00	13,184.10	88.87%
304	Professional & Scientific Supplies	21,000.00	47,508.71	226.23%
306	Housing & Subsistence Supplies	39,847.00	64,833.48	162.71%
308	Other Supplies	21,000.00	24,605.44	117.17%
311	Food	300,000.00	339,264.54	113.09%
401	Communications	69,667.00	85,230.34	122.34%
402	Rentals	87,935.00	86,813.28	98.72%
403	Utilities	171,372.00	172,132.80	100.44%
405	Professional & Scientific Services	248,972.00	320,820.30	128.86%
406	Outside Services	598,754.00	504,638.25	84.28%
407	Intra-State Transfers	-	1,667.75	---
408	Advertising & Publicity	-	3,509.79	---
409	Outside Repairs/Service	19,000.00	61,001.10	321.06%
412	Auditor of State Reimbursements	60,000.00	67,324.95	112.21%
414	Reimbursement to Other Agencies	27,960.00	51,884.16	185.57%
416	ITS Reimbursements	61,219.00	57,345.55	93.67%
417	Worker's Compensation	47,490.00	47,490.00	100.00%
501	Equipment	17,010.00	129,120.52	759.09%
503	Equipment - Non-Inventory	5,000.00	44,634.94	892.70%
510	IT Equipment	118,906.00	191,164.23	160.77%
602	Other Expense & Obligations	40,425.00	82,760.07	204.72%
91B	Balance Carry Forward	-	49,343.67	---
Total Expenses		18,079,486.00	18,116,685.70	99.84%

STATISTICS

Field Services Supervision Status

During FY'13 there were 3,500 new admissions and 3,520 closures in field services supervision.

Supervision Status	Active at Start	New Admits	Closures	Active at End	Offenders Served
Interstate Compact Parole	26	17	11	31	43
Interstate Compact Probation	78	43	47	81	121
No Correctional Supervision Status	2	25	31	0	27
Parole	188	226	197	221	413
Pretrial Release With Supervision	248	725	695	264	973
Probation	3,317	2,440	2,520	3,102	5,757
Special Sentence	62	24	19	77	86
Total	3,921	3,500	3,520	3,776	7,420

Field Service Supervision New Admissions

Supervision Status	Total	Percentage
Special Sentence	24	0.7%
Parole	226	6.4%
Interstate Compact Parole	17	0.5%
Probation	2,440	69.8%
Interstate Compact Probation	43	1.2%
Pretrial Release With Supervision	725	20.7%
No Correctional Supervision Status	25	0.7%
Total/Percentage	3,500	100%

By Offense Class

Offense Class	Total	Percentage
A Felony	1	0.0%
B Felony	43	1.2%
Felony – Enhanced to Original Penalty	12	0.3%
C Felony	253	7.2%
D Felony	844	24.1%
Aggravated Misdemeanor	808	23.1%
Serious Misdemeanor	1,412	40.3%
Simple Misdemeanor	42	1.2%
NCIC Virtual Code	60	1.7%
Special Sentence 20005	25	0.7%
Offense Class Total/Percentage	3,500	100%

The counts do not include transfers between residential and field where the supervision status did not change. Active At Start and Active At End counts do not include offenders who have a supervision modifier of other than "In Jail".

Field Service Supervision New Admissions – continued

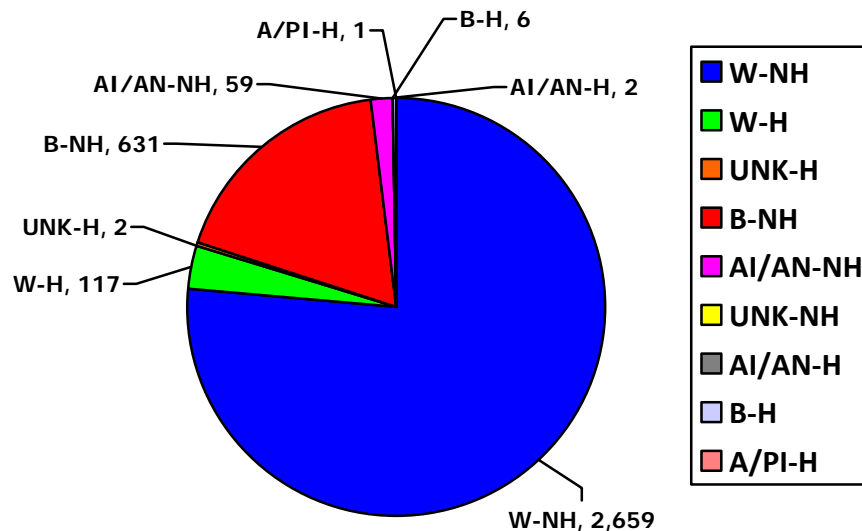
By Gender:

Supervision Status	Female	Male	Total
Interstate Compact Parole	2	15	17
Interstate Compact Probation	12	31	43
No Correctional Supervision Status	7	18	25
Parole	25	201	226
Pretrial Release W/Supervision	154	571	725
Probation	627	1,814	2,441
Special Sentence	1	34	35
Gender Total	828	2,672	3,500
Percentage	23.7%	76.3%	100%

By Race - Ethnicity:

H = Hispanic; NH = Non-Hispanic; W = White; B = Black; A/PI = Asian/Pacific Islander; AI/AN = American Indian/Alaska Native; Unk = Unknown

Supervision Status	W-NH	B-NH	AI/AN -NH	A/PI - NH	UNK - NH	W-H	B-H	AI/AN - H	A/PI - H	Total
Parole Compact	13	4	0	0	0	0	0	0	0	17
Probation Compact	36	5	1	0	0	1	0	0	0	43
No Corr. Supervision Status	20	4	0	0	0	1	0	0	0	25
Parole	152	55	10	2	1	4	2	0	0	2,252
Pretrial Release W/Sup.	462	203	23	4	1	29	2	1	0	725
Probation	1,953	359	25	17	0	82	2	1	1	2,441
Special Sentence	23	1	1	0	0	0	0	0	0	35
Race / Ethnicity Total	2,659	631	59	23	2	117	6	2	1	3,500



Field Service Supervision Closures

By Reason For Change:

Sup Status\Reason For Change	Administrative	Intermediate Sanction	Successful	Unsuccessful	Total
Interstate Compact Parole	3	0	8	0	11
Interstate Compact Probation	15	0	32	0	47
No Correctional Supervision	19	0	11	1	31
Parole	2	41	122	32	197
Pretrial Release W/Supervision	15	0	491	189	695
Probation	19	0	2,005	496	2,520
Special Sentence	1	7	6	5	19
Total	74	48	2,675	723	3,520

By Closure Reason:

Closure Reason	Administrative	Intermediate Sanction	Successful	Unsuccessful	Total
Acquitted/Dismissed	0	0	44	0	44
Adjudicated (Pretrial Only)	0	0	449	0	449
Death	16	0	0	0	16
Discharged – Absconder/Escape	0	0	0	2	2
Discharged – Contempt	0	0	0	107	107
Discharged – Deported	1	0	0	0	1
Discharged-Expiration of Sentence	0	0	673	0	673
Discharge-Early Discharge	0	0	1,484	0	1,484
Released on Bond	0	0	2	0	2
Released to Special Sentence	0	0	18	0	18
Returned to Sending Jurisdiction	17	0	0	0	17
Revoked	0	0	0	579	579
Revoked Parole-Discharged	0	0	0	2	2
Revoked Parole-Work Rel. Granted	0	48	0	0	48
Revoked-Served in Jail	0	0	0	21	21
Revoked-Time Served	0	0	0	12	12
Terminated by Appeal-Overtured	0	0	1	0	1
Terminated by Court	34	0	0	0	34
Transferred Release-Recognizance	0	0	3	0	3
Transferred-Release W/ PTR Services	6	0	0	0	6
Unsupervised Probation Grant	0	0	1	0	1
Closure Category Total	74	48	2,675	723	3,520

Field Service Supervision Closures – continued

By Gender:

Supervision Status	Female	Male	Total
Interstate Compact Parole	4	7	11
Interstate Compact Probation	9	38	47
No Correctional Supervision Status	7	24	31
Parole	22	175	197
Pretrial Release With Supervision	142	553	695
Probation	711	1,809	2,520
Special Sentence	0	19	19
Gender Total	895	2,625	3,520
Percentage	25.4%	74.6%	100%

By Race - Ethnicity:

H = Hispanic; NH = Non-Hispanic; W = White; B = Black; A/PI = Asian/Pacific Islander;
AI/AN = American Indian/Alaska Native; Unk = Unknown

Supervision Status	W-NH	B - NH	AI/AN - N	A/PI - NH	W-H	B-H	AI/AN - H	A/PI - H	Total
Interstate Compact Parole	8	2	0	1	0	0	0	0	11
Interstate Compact Probation	37	4	1	1	4	0	0	0	47
No Correctional Supervision Status	22	6	0	0	3	0	0	0	31
Parole	137	42	10	1	6	0	0	1	197
Pretrial Release W/Supervision	450	200	20	3	20	1	1	0	695
Probation	2,083	310	28	25	71	2	1	0	2,520
Special Sentence	15	3	0	0	1	0	0	0	19
Race/ Ethnicity Total	2,753	567	59	31	105	3	2	1	3,520

By Offense Class:

Offense Class	Total	Percentage
B Felony	39	1.1%
Felony - Enhancement to Original Penalty	13	0.4%
Other Felony	1	0.0%
C Felony	244	6.9%
D Felony	790	22.4%
Felony – Mandatory Minimum	1	0.0%
Aggravated Misdemeanor	864	25.1%
Serious Misdemeanor	1,428	40.6%
Simple Misdemeanor	44	1.3%
NCIC Virtual Code	57	1.6%
Special Sentence 2005	19	0.5%
Offense Class Total/Percentage	3,520	100%

SPECIALTIES

During FY'13 there were 2,729 new admissions and 2,820 closures in supervision specialties.

SP NA Specialty	Active at Start	New Admits	Closures	Active at End	Offenders Served
AnyTrax	53	14	33	34	67
Drug Court Supervision	60	57	49	68	117
Federal BOP	25	52	54	24	77
Federal Public Law	4	33	27	11	37
Global Positioning - Satellite	62	90	105	55	152
Global Positioning – Cellular	4	2	3	3	6
Home Confinement - Federal Offender	10	15	25	2	25
Intensive Supervision	102	108	127	87	208
Intensive Supervision - Sex Offenders	114	68	60	128	182
Jail (Designated Site)	1	0	1	0	1
Low Risk Probation	1,482	1,715	1,810	1,404	3,197
Mental Health Re-Entry	58	80	38	105	138
Minimum Risk Program	306	333	270	374	639
OWI Pre-Placement	1	9	9	1	10
Radio Frequency	5	13	19	1	18
Reentry Support Project (RSP)	1	0	1	0	1
Top 25	18	21	25	15	39
Transitional Mental Health Re-Entry	43	93	131	7	136
Video Display/Breath Alcohol Test/Radio Frequency	7	10	13	4	17
Voice Verification	1	0	1	0	1
WOCMM (Women Offender Case Management Model)	33	18	19	32	51
Specialties Total	2,390	2,729	2,820	2,355	5,119

Specialties – continued

By Gender:

Female

SP NA Specialty	Active at Start	New Admits	Closures	Active At End	Offenders Served
AnyTrax	15	7	4	18	22
Drug Court Supervision	8	16	12	12	24
Federal BOP	1	6	5	2	7
Federal Public Law	0	6	4	2	6
Global Positioning - Satellite	0	1	0	1	1
Home Confinement - Federal Offender	3	2	4	1	5
Intensive Supervision	2	8	6	5	10
Intensive Supervision - Sex Offenders	3	2	2	3	5
Low Risk Probation	462	485	553	401	947
Mental Health Re-Entry	19	31	12	40	50
Minimum Risk Program	121	101	88	134	222
OWI Pre-Placement	0	3	3	0	3
Radio Frequency	1	2	3	0	3
Top 25	1	1	2	0	2
Transitional Mental Health Re-Entry	15	27	39	3	42
Video Display/Breath Alcohol Test/Radio Frequency	2	1	2	1	3
WOCMM (Women Offender Case Management)	33	18	19	32	51
Specialties – Female Total	686	717	758	655	1,403

Male

SP NA Specialty	Active at Start	New Admits	Closures	Active at End	Offenders Served
AnyTrax	38	7	29	16	45
Drug Court Supervision	52	41	37	56	93
Federal BOP	24	46	49	22	70
Federal Public Law	4	27	23	9	31
Global Positioning - Satellite	63	90	105	54	153
Global Positioning – Cellular	4	2	3	3	6
Home Confinement - Federal Offender	8	14	21	1	22
Intensive Supervision	100	98	121	82	198
Intensive Supervision - Sex Offenders	112	66	58	125	178
Jail (Designated Site)	1	0	1	0	1
Low Risk Probation	1,020	1,230	1,257	1,003	2,250
Mental Health Re-Entry	41	49	26	65	90
Minimum Risk Program	187	232	182	240	419
OWI Pre-Placement	1	6	6	1	7
Radio Frequency	5	12	16	1	17
Reentry Support Project (RSP)	1	0	1	0	1
Top 25	17	20	23	15	37
Transitional Mental Health Re-Entry	28	68	92	4	96
Video Display/Breath Alcohol Test/Radio Frequency	5	9	11	3	14
Voice Verification	1	0	1	0	1
Specialties – Male Total	1,712	2,017	2,062	1,700	3,729

Specialties – continued

By Race - Ethnicity:

H = Hispanic; NH = Non-Hispanic; W = White; B = Black; A/PI = Asian/Pacific Islander;
AI/AN = American Indian/Alaska Native; Unk = Unknown

W-NH

SP NA Specialty	Active at Start	New Admits	Closures	Active at End	Offenders Served
AnyTrax	41	12	28	25	53
Drug Court Supervision	47	42	37	52	89
Federal BOP	16	34	35	16	50
Federal Public Law	2	12	11	4	14
Global Positioning - Satellite	55	70	85	46	125
Global Positioning Satellite - Cellular	3	2	2	3	5
Home Confinement - Federal Offender	10	14	23	1	24
Intensive Supervision	44	48	60	35	82
Intensive Supervision - Sex Offenders	96	59	50	108	155
Jail (Designated Site)	1	0	1	0	1
Low Risk Probation	1,242	1,422	1,531	1,147	2,664
Mental Health Re-Entry	50	64	35	82	114
Minimum Risk Program	259	295	238	319	554
OWI Pre-Placement	1	8	8	1	9
Radio Frequency	6	13	18	1	19
Reentry Support Project (RSP)	1	0	1	0	1
Top 25	3	8	8	3	11
Transitional Mental Health Re-Entry	35	71	99	7	106
Video Display/Breath Alcohol Test/Radio Frequency	7	7	12	2	14
Voice Verification	1	0	1	0	1
WOCMM (Women Offender's Case Mgmt Model)	25	14	17	22	39
Specialties – W-NH Total	1,945	2,195	2,300	1,874	4,140

W - H

SP NA Specialty	Active at Start	New Admits	Closures	Active at End	Offenders Served
AnyTrax	1	1	0	2	2
Drug Court Supervision	1	2	1	2	3
Federal BOP	0	5	3	2	5
Global Positioning - Satellite	1	2	2	1	3
Home Confinement – Federal Offender	0	1	1	0	1
Intensive Supervision	2	2	2	2	4
Intensive Supervision - Sex Offenders	7	3	3	8	10
Low Risk Probation	36	48	47	37	84
Mental Health Re-Entry	2	4	2	4	6
Minimum Risk Program	9	11	7	13	20
OWI Pre-Placement					
Top 25	1	0	1	0	1
Transitional Mental Health Re-Entry	3	5	8	0	8
Video Display/Breath Alcohol Test/Radio Frequency	0	1	0	1	1
WOCMM (Women Offender's Case Mgmt Model)	2	1	0	3	3
Specialties – W-H Total	65	86	77	75	151

Specialties – continued

B-NH

SP NA Specialty	Active at Start	New Admits	Closures	Active at End	Offenders Served
AnyTrax	10	1	4	7	11
Drug Court Supervision	12	12	11	13	24
Federal BOP	9	10	15	4	19
Federal Public Law	2	20	15	7	22
Global Positioning - Satellite	5	18	16	7	23
Global Positioning Satellite - Cellular	1	0	1	0	1
Home Confinement - Federal Offender	1	0	1	0	1
Intensive Supervision	53	52	60	48	105
Intensive Supervision - Sex Offenders	10	6	6	11	16
Low Risk Probation	173	214	199	191	387
Mental Health Re-Entry	5	11	0	16	16
Minimum Risk Program	38	24	23	39	62
Radio Frequency	0	1	1	0	1
Top 25	14	13	16	12	27
Transitional Mental Health Re-Entry	4	18	22	0	22
Video Display/Breath Alcohol Test/Radio Frequency	0	1	0	1	1
WOCMM (Women Offender's Case Mgmt Model)	5	2	1	6	7
Specialties – B-NH Total	342	403	391	362	745

B-H

SP NA Specialty	Active at Start	New Admits	Closures	Active at End	Offenders Served
Federal BOP	0	1	0	1	1
Low Risk Probation	1	0	1	0	1
Minimum Risk Program	0	1	0	1	1
Specialties – B-H Total	1	2	1	2	3

A/PI - NH

SP NA Specialty	Active at Start	New Admits	Closures	Active at End	Offenders Served
AnyTrax	1	0	1	0	1
Federal BOP	0	1	0	1	1
Home Confinement – Federal Offender	0	1	0	1	1
Intensive Supervision	1	0	1	0	1
Low Risk Probation	17	14	20	11	31
Mental Health Re-Entry	3	0	1	2	3
Minimum Risk Program	1	2	1	2	3
Video Display/Breath Alcohol Test/Radio Frequency	0	1	1	0	1
Specialties – A/PI-NH Total	23	19	25	17	42

Specialties – continued

AI/AN - NH

SP NA Specialty	Active at Start	New Admits	Closures	Active at End	Offenders Served
Drug Court Supervision	0	1	0	1	1
Federal BOP	0	1	1	0	1
Federal Public Law	0	1	1	0	1
Global Positioning - Satellite	1	1	1	1	2
Intensive Supervision	1	4	3	2	5
Intensive Supervision - Sex Offenders	1	0	0	1	1
Low Risk Probation	12	17	11	18	29
Mental Health Re-Entry	0	1	1	0	1
Minimum Risk Program	1	0	1	0	1
OWI Pre-Placement	0	1	1	0	1
Transitional Mental Health Re-Entry	1	1	2	0	2
WOCMM (Women Offender's Case Mgmt Model)	1	1	1	1	2
Specialties - AI/AN-NH Total	18	29	22	25	47

AI/AN - H

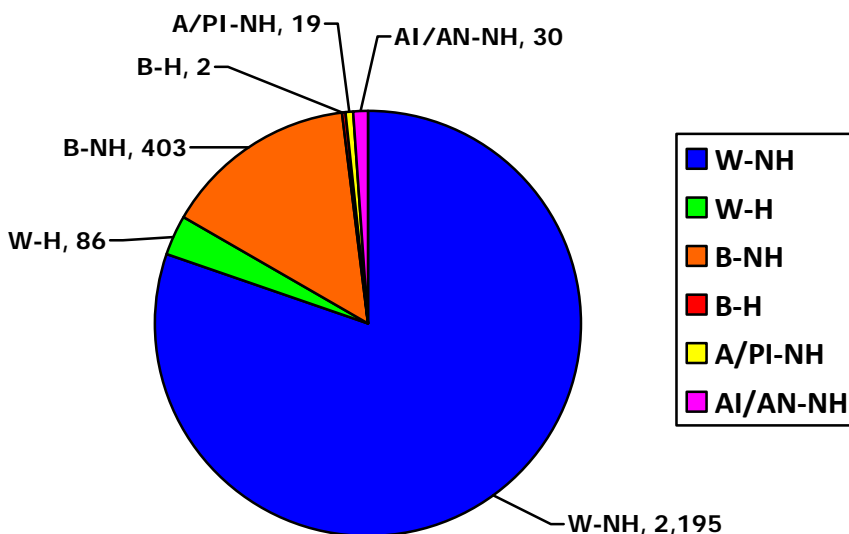
SP NA Specialty	Active at Start	New Admits	Closures	Active at End	Offenders Served
Global Positioning - Satellite	1	0	1	0	1
Intensive Supervision - Sex Offenders	1	0	1	0	1
Low Risk Probation	1	0	1	0	1
Specialties – AI/AN-H Total	3	0	3	0	3

UNK - NH

SP NA Specialty	Active at Start	New Admits	Closures	Active at End	Offenders Served
Intensive Supervision	1	0	1	0	1
Specialties – UNK - NH Total	1	0	1	0	1

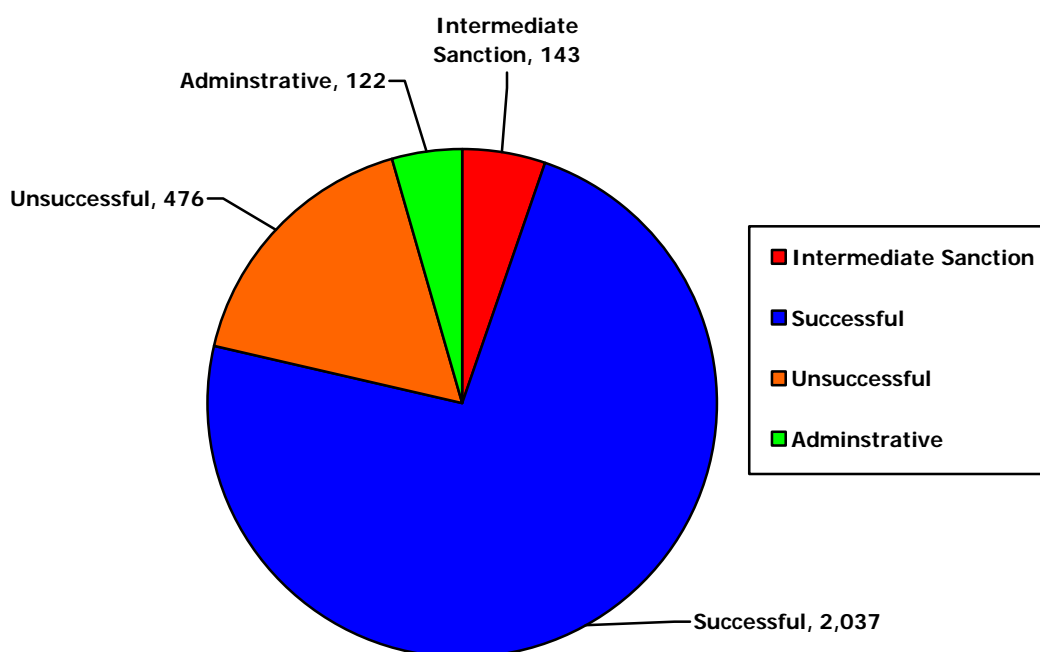
NEW ADMISSIONS:

H=Hispanic; NH=Non-Hispanic; W=White; B=Black; A/PI=Asian/Pacific Islander; AI/AN=American Indian/Alaska Native



Specialty Closures by Closure Type

Specialty/Closure Category	Successful	Intermediate Sanction	Unsuccessful	Administrative	Totals	% of Total
AnyTrax	23	8	1	1	33	1.2%
Drug Court Supervision	13	0	33	3	49	1.8%
Federal BOP	48	0	5	0	53	1.9%
Federal Public Law	16	0	10	0	26	0.9%
Global Positioning - Satellite	52	21	10	16	99	3.6%
Global Positioning Satellite - Cellular	2	0	0	1	3	0.1%
Home Confinement - Federal Offender	25	0	0	0	25	0.9%
Intensive Supervision	47	30	22	22	121	4.4%
Intensive Supervision - Sex Offenders	23	5	6	22	56	2.0%
Jail (Designated Site)	0	0	1	0	1	0.0%
Low Risk Probation	1,404	20	357	12	1,793	64.5%
Mental Health Re-Entry	22	5	4	4	35	1.3%
Minimum Risk Program	215	36	2	14	267	9.6%
OWI Pre-Placement	9	0	0	0	9	0.3%
Radio Frequency	17	0	1	1	19	0.7%
Reentry Support Project (RSP)	1	0	0	0	1	0.0%
Top 25	10	8	2	4	24	0.9%
Transitional Mental Health Re-Entry	96	3	13	19	131	4.7%
Video Display/Breath Alcohol /Radio Frequency	9	3	1	0	13	0.5%
Voice Verification	1	0	0	0	1	0.0%
WOCMM-Women Offender Case Mgmt Model	4	4	8	3	19	0.7%
Specialty Closure Total	2,037	143	476	122	2,778	100%



RESIDENTIAL

During FY'13 there were 531 new admissions and 466 closures in residential supervision.

Real & Virtual Count (VC) Beds Only

Supervision Status	Active at Start	New Admits	Closures	Active at End	Offenders Served
Federal	39	84	81	35	123
Jail (Designated Site)					
OWI Continuum	25	36	46	13	61
Parole	1	1	1	0	2
Pretrial Release With Supervision	0	6	1	0	6
Probation	106	204	154	117	310
Special Sentence	4	20	11	8	24
Work Release	34	176	121	58	210
Total	209	527	415	231	736

Virtual Tracking (VT) Beds Only

Supervision Status	Active at Start	New Admits	Closures	Active at End	Offenders Served
Federal	0	0	4	0	0
OWI Continuum	0	0	2	0	0
Probation	12	4	26	8	16
Special Sentence	0	0	1	0	0
Work Release	0	0	18	2	0
Total	12	4	51	10	16

Residential Supervision New Admissions

By Work Unit and Supervision Status (Real & VC Beds Only):

Work Unit	FED	OWI Continuum	PA	RWS	PB	Special Sentence	Work Release	Total/Percent
Gerald R Hinzman Residential Center	84	7	0	0	56	0	17	164 31.1%
Lary A Nelson Residential Center	0	19	1	3	91	14	116	244 46.3%
Hope House Residential Center	0	10	0	3	57	6	43	119 22.6%
Sup Status Total	84	36	1	6	204	20	176	527
Percentage	16.0%	6.8%	0.2%	1.1%	38.7%	3.8%	33.4%	100%

By Work Unit and Offense Class (Real & VC Beds Only):

Work Unit	BF	CF	DF	FEL - ENH	AG	SE	NCIC	Special Sentence 2005	Total/Percent
Gerald R Hinzman Residential Center	1	19	57	0	2	1	83	1	164 31.1%
Lary A Nelson Residential Center	7	73	125	7	9	2	0	21	244 46.3%
Hope House Residential Center	2	28	68	4	11	0	0	6	119 22.6%
Offense Class Total	10	120	250	11	22	3	83	28	527
Percentage	1.9%	22.8%	47.4%	2.1%	4.2%	0.6%	15.7%	5.3%	100%

Residential Supervision New Admissions – continued

(Real & VC Beds Only)

Cedar Rapids – Gerald R Hinzman Residential Center

Supervision Status/ Offense Class	BF	CF	DF	AG	SE	NCIC	Total/ Percent
Work Release	1	8	7	0	0	0	16 9.8%
OWI Continuum	0	0	7	0	0	0	7 4.2%
Federal	0	0	1	0	0	83	84 51.2%
Probation	0	12	42	2	1	0	57 34.8%
Offense Class Total Percentage	1 0.6%	20 12.2%	57 34.8%	2 1.2%	1 0.6%	83 50.6%	164 100%

Cedar Rapids – Lary A Nelson Residential Center

Supervision Status/ Offense Class	BF	FEL - ENH	CF	DF	AG	SE	UNK	Total/ Percent
Work Release	7	7	44	51	0	0	7	116 47.6%
OWI Continuum	0	0	0	19	0	0	0	19 7.8%
Special Sentence	0	0	0	0	0	0	14	14 5.7%
Parole	0	0	1	0	0	0	0	1 0.4%
Probation	0	0	27	53	9	0	2	91 37.3%
Pretrial With Supervision	0	0	0	1	0	2	0	3 1.2%
Offense Class Total Percentage	7 2.9%	7 2.9%	72 29.5%	124 50.8%	9 3.7%	2 0.8%	23 9.4%	244 100%

Coralville - Hope House Residential Center

Supervision Status/ Offense Class	BF	FEL - ENH	CF	DF	AG	SE	UNK	Total/ Percent
Work Release	2	4	19	16	2	0	0	43 36.1%
OWI Continuum	0	0	0	9	1	0	0	10 8.4%
Special Sentence	0	0	0	0	0	0	6	6 5.0%
Probation	0	0	9	40	8	0	0	57 47.9%
Pretrial With Supervision	0	0	0	3	0	0	0	3 2.5%
Offense Class Total Percentage	2	4	28	68	11	0	6	119 100%

Residential Supervision New Admissions – continued

(Real & VC Beds Only)

By Gender:

Female

Supervision Status	W-NH	B-NH	A/PI – NH	AI/AN - NH	W-H	Total/ Percent
Work Release	11	3	0	0	1	15 25.9%
OWI Continuum	4	0	0	2	0	6 10.3%
Federal	5	5	1	0	1	12 20.7%
Probation	21	4	0	0	0	25 43.1%
Race/Ethnicity Total Percentage	41 70.7%	12 20.7%	1 1.7%	2 3.4%	2 3.4%	58 100%

Male

Supervision Status	W-NH	B-NH	A/PI - NH	AI/AN - NH	W - H	B-H	AI/AN – H	Total/ Percent
Work Release	91	65	0	4	1	0	0	161 34.4%
OWI Continuum	25	2	0	2	1	0	0	30 6.4%
Special Sentence	13	6	0	0	1	0	0	20 4.3%
Parole	1	0	0	0	0	0	0	1 0.2%
Federal	43	22	0	1	4	1	0	72 15.4%
Probation	111	52	1	4	10	0	1	179 38.0%
Pretrial Release W/Sup.	4	2	0	0	0	0	0	6 1.3%
Race/Ethnicity Total Percentage	288 61.3%	149 31.8%	1 0.2%	13 2.8%	16 3.4%	1 0.2%	1 0.2%	469 100%

Residential Supervision Closures

During FY'13 there were 463 (412 Real/Virtual Count; 51 Virtual Tracking) closures in residential supervision.

(Real & VC Beds Only)

Supervision Status	Total
Work Release	120
OWI Continuum	45
Special Sentence	11
Parole	1
Federal	81
Probation	153
Pretrial Release w/Supervision	1
Housing Group Total Percentage	412 88.9%

(VT Beds Only)

Supervision Status	Total
Work Release	18
OWI Continuum	2
Special Sentence	1
Parole	0
Federal	4
Probation	26
Pretrial Release w/Supervision	1
Housing Group Total Percentage	51 11.1%

Supervision Status – Offense Class (Real & VC Beds Only)

Supervision Status	BF	FEL - ENH	CF	DF	AG	SE	NCIC	UNK	Total	Percent
Work Release	7	8	44	54	2	0	0	5	120	29.1%
OWI Continuum	0	0	0	40	5	0	0	0	45	10.9%
Special Sentence	0	0	0	0	0	0	0	11	11	2.7%
Parole	0	0	1	0	0	0	0	0	1	0.2%
Federal	0	0	0	0	0	0	81	0	81	19.7%
Probation	0	3	38	97	14	1	0	0	153	37.1%
Pretrial W/Supervision	0	0	0	1	0	0	0	0	1	0.2%
Offense Class Total Percentage	7 1.7%	11 2.7%	83 20.1%	192 46.6%	21 5.1%	1 0.2%	81 19.7%	16 3.9%	412	100%

Residential Supervision Closures – continued

Housing Group -Offense Subtype - Offense Type (Real & VC Beds Only)

Offense Subtype	Violent	Property	Drug	Public Order	Other	Total	Percent
Arson	0	4	0	0	0	4	1.0%
Assault	23	0	0	0	0	23	5.6%
Burglary	0	47	0	0	0	47	11.4%
Drug Possession	0	0	12	0	0	12	2.9%
Flight/Escape	0	0	0	2	0	2	0.5%
Forgery/Fraud	0	12	0	0	0	12	2.9%
Murder/Manslaughter	7	0	0	0	0	7	1.7%
Other Criminal	0	0	0	0	15	15	3.6%
Other Drug	0	0	43	0	0	43	10.4%
Other Public Order	0	0	0	4	0	4	1.0%
Other Violent	6	0	0	0	4	10	2.4%
OWI	0	0	0	69	0	69	16.7%
Robbery	13	0	0	0	0	13	3.2%
Sex	28	0	0	0	0	28	6.8%
Theft	0	22	0	0	0	22	5.3%
Traffic	0	0	0	3	0	3	0.7%
Trafficking	0	0	66	0	0	66	16.0%
Vandalism	0	2	0	0	0	2	0.5%
Weapons	0	0	0	30	0	30	7.3%
Offense Type Total	77	87	121	108	19	412	100%
Percentage	18.7%	21.1%	29.4%	26.2%	4.6%		

Supervision Status – Closure Category - By Facility (Real & VC Beds Only)

Closure Reason/ Category	Successful	Unsuccessful	Administrative	Total
Gerald R Hinzman Center	105	22	9	136
Lary A Nelson Center	118	37	25	180
Hope House	66	24	6	96
Closure Category Total	289	83	40	412

Supervision Status – Closure Category (Real & VC Beds Only)

Closure Reason/ Category	Successful	Unsuccessful	Administrative	Total
Work Release	85	35	0	120
OWI Continuum	33	10	2	45
Special Sentence	10	1	0	11
Parole	1	0	0	1
Federal	70	11	0	81
Probation	89	26	38	153
Pretrial Release w/Supervision	1	0	0	1
Closure Category Total	289	83	40	412

Residential Supervision Closures – continued

Closure Reason/Category (Real & VC Beds Only)

Closure Reason / Category	Successful	Unsuccessful	Administrative	Total
Adjudicated (Pretrial Only)	1	0	0	1
Discharged – Contempt	0	12	0	12
Discharged-Expiration Sentence	11	0	0	11
Discharge-Early Discharge	1	0	0	1
Federal Residential Offender – Successful	67	0	0	67
Parole Granted	108	0	0	108
Released Custody of US Probation Office	2	0	0	2
Released to Special Sentence	2	0	0	2
Revoked	0	54	0	54
Revoked – Served in Jail	0	1	0	1
Work Unit– Field to Field	0	0	3	3
Work Unit - Residential to Field	97	4	12	113
Work Unit - Residential to Prison	0	1	0	1
Work Unit - Residential to Residential	0	0	21	21
Closure Category Total	289	83	40	412

By Gender (Real & VC Beds Only):

Female

Supervision Status	Total
Work Release	7
OWI Continuum	5
Special Sentence	0
Parole	0
Federal	12
Probation	24
Pretrial Release w/Supervision	0
Housing Group Total	48
Percentage	11.7%

Male

Supervision Status	Total
Work Release	113
OWI Continuum	40
Special Sentence	11
Parole	1
Federal	69
Probation	129
Pretrial Release w/Supervision	1
Housing Group Total	364
Percentage	88.3%

By Race – Ethnicity (Real & VC Beds Only):

H = Hispanic; NH = Non-Hispanic; W = White; B = Black; A/PI = Asian/Pacific Islander;
AI/AN = American Indian/Alaska Native

Supervision Status	W -NH	B -NH	AI/AN - NH	A/PI - NH	W - H	AI/AN - H	Total
Work Release	65	48	3	1	3	0	120
OWI Continuum	30	6	6	0	3	0	45
Special Sentence	6	5	0	0	0	0	11
Parole	1	0	0	0	0	0	1
Federal	50	26	2	0	3	0	81
Probation	101	43	2	0	6	1	153
Pretrial W/Supervision	1	0	0	0	0	0	1
Race/Ethnicity Total	254	128	13	1	15	1	412
Percentage	61.7%	31.1%	3.1%	0.2%	3.7%	0.2%	100%

CBC RESIDENTIAL LENGTH OF STAY

The following chart indicates the length of stay for successful completions by supervision status:

Supervision Status	WU Reason for Change Cat	LOS Days	Count Closures Work Unit Residential	LOS Months
Work Release	Successful	11,389	86	4.4
OWI Continuum	Successful	5,488	33	5.5
Parole	Successful	85	1	2.8
Federal	Successful	10,869	70	5.1
Probation	Successful	18,716	90	6.8
Pretrial Release w/Supervision	Successful	137	1	4.5
Special Sentence	Successful	983	10	3.2

Region Average Length of Stay-Months	5.4
---	------------

AVERAGE DAILY POPULATION

Residential Facility	Average Daily Population
Hinzman Center (GRHC)	75.02
Nelson Center (CRF)	103.40
Hope House (ICF)	55.35

INTERVENTION PROGRAMS

During FY'13 there were 572 new admissions and 515 closures in intervention programs.

Intervention Program	Active at Start	New Admits	Closures	Active at End	Offenders Served
Batterer's Education Program	536	320	275	559	856
Day Program	8	80	82	5	88
Drug Court Program	70	79	72	79	149
OWI Program	31	34	42	23	65
Sex Offender Program	145	59	44	160	204
Total	790	572	515	826	1,362

By Gender:

Female

Intervention Program	Active at Start	New Admits	Closures	Active at End	Offenders Served
Batterer's Education Program	62	45	38	68	107
Day Program	2	15	15	2	17
Drug Court Program	15	20	18	18	35
OWI Program	3	5	6	2	8
Sex Offender Program	4	1	1	4	5
Total	86	86	78	94	172

Male

Intervention Program	Active at Start	New Admits	Closures	Active at End	Offenders Served
Batterer's Education Program	473	273	235	490	746
Day Program	6	65	67	3	71
Drug Court Program	55	59	54	61	114
OWI Program	28	29	36	21	57
Sex Offender Program	140	58	43	155	198
Total	702	484	436	730	1,186

Unknown

Intervention Program	Active at Start	New Admits	Closures	Active at End	Offenders Served
Batterer's Education Program	1	2	2	1	3
Sex Offender Program	1	0	0	1	1
Total	2	2	2	2	4

Intervention Programs - continued

By Race – Ethnicity:

H = Hispanic; NH = Non-Hispanic; W = White; B = Black; A/PI = Asian/Pacific Islander;
AI/AN = American Indian/Alaska Native; Unk = Unknown

AI-AN - H

Intervention Program	Active at Start	New Admits	Closures	Active at End	Offenders Served
Batterer's Education Program	0	1	1	0	1
Day Program	0	1	1	0	1
Sex Offender Program	1	0	0	1	1
Total	1	2	2	1	3

AI-AN - NH

Intervention Program	Active at Start	New Admits	Closures	Active at End	Offenders Served
Batterer's Education Program	7	2	2	7	9
Day Program	0	1	1	0	1
Drug Court Program	0	1	0	1	1
OWI Program	5	4	6	3	9
Sex Offender Program	4	2	4	2	6
Total	16	10	13	13	26

A/PI - NH

Intervention Program	Active at Start	New Admits	Closures	Active at End	Offenders Served
Batterer's Education Program	3	1	2	2	4
Day Program	0	1	0	1	1
Total	3	2	2	3	5

B - H

Intervention Program	Active at Start	New Admits	Closures	Active at End	Offenders Served
Batterer's Education Program	3	0	0	3	3
Total	3	0	0	3	3

B - NH

Intervention Program	Active at Start	New Admits	Closures	Active at End	Offenders Served
Batterer's Education Program	247	10	8	250	349
Day Program	2	13	14	1	15
Drug Court Program	16	17	18	14	33
OWI Program	6	2	6	2	8
Sex Offender Program	11	7	3	14	18
Total	282	141	129	281	423

Intervention Programs - continued

UNK - NH

Intervention Program	Active at Start	New Admits	Closures	Active at End	Offenders Served
Batterer's Education Program	1	2	2	1	3
Sex Offender Program	1	0	0	1	1
Total	2	2	2	2	4

W - H

Intervention Program	Active at Start	New Admits	Closures	Active at End	Offenders Served
Batterer's Education Program	24	16	22	17	40
Day Program	0	1	1	0	1
Drug Court Program	1	4	4	2	5
OWI Program	3	1	3	1	4
Sex Offender Program	4	0	0	4	4
Total	32	22	30	24	54

W - NH

Intervention Program	Active at Start	New Admits	Closures	Active at End	Offenders Served
Batterer's Education Program	251	196	158	279	447
Day Program	6	63	65	3	69
Drug Court Program	54	57	50	62	110
OWI Program	17	27	27	17	44
Sex Offender Program	124	50	37	138	174
Total	451	383	337	499	844

Intervention Programs by Closure Category

Intervention Program Closure Category	Administrative	Intermediate Sanction	Successful	Unsuccessful	Total	Percent
Batterer's Education Program	36	0	232	7	275	53.4%
Day Program	1	4	71	6	82	15.9%
Drug Court Program	19	1	13	39	72	14.0%
OWI Program	1	1	27	13	42	8.2%
Sex Offender Program	8	1	27	8	44	8.5%
Totals by Category Percentage	65 12.5%	7 1.4%	370 71.8%	73 14.2%	515 100%	

INTERVENTIONS (INTERNAL)

During FY'13 there were 2,798 new admissions and 2,765 closures in intervention programs.

Internal Intervention	Active at Start	New Admits	Closures	Active at End	Offenders Served
Accountability Group - Coralville	6	7	11	4	13
Accountability Group - Cedar Rapids	12	30	20	22	42
ACTV: Achieving Change thru Value-Based Behavior-CR	10	112	96	43	122
ACTV: Achieving Change thru Value-Based Behavior-Coralville	7	96	73	43	103
ACTV: Achieving Change thru Value-Based Behavior - Toledo	0	7	7	0	7
ANCHOR Outpatient Substance Abuse Services	4	9	9	4	13
Batterer's Education Program - Cedar Rapids	12	80	96	29	92
Batterer's Education Program - Coralville	24	50	85	7	74
BEP Intake - Cedar Rapids	0	49	49	0	49
BEP Intake - Coralville	0	10	10	0	10
BEP Moving On - Cedar Rapids	4	21	25	11	25
BEP Moving On - Coralville	2	28	18	17	30
Circle of Support/Accountability - Cedar Rapids	3	6	2	7	9
Circle of Support/Accountability - Coralville	0	1	0	1	1
Cognitive Aftercare - Cedar Rapids	9	27	26	10	36
Community Accountability Board - Cedar Rapids	13	17	14	16	30
Community Accountability Board - Coralville	8	3	5	6	11
DCS Adult Mentoring Program - Cedar Rapids	12	10	12	12	22
DCS Adult Mentoring Program - Coralville	8	0	5	3	8
DCS Alternative BEP - Cedar Rapids	1	2	1	4	3
DCS Alternative BEP - Toledo	0	0	1	0	0
DCS Employment Assistance - Cedar Rapids	4	3	3	4	7
DCS Employment Assistance - Coralville	11	17	11	16	28
DCS Psychological Evaluation - Cedar Rapids	0	2	1	1	2
Drug Court - Phase 1 - Cedar Rapids	2	33	30	7	35
Drug Court - Phase 1 - Coralville	5	16	18	3	21
Drug Court - Phase 2 - Cedar Rapids	7	22	23	6	29
Drug Court - Phase 2 - Coralville	4	20	18	6	24
Drug Court - Phase 3 - Cedar Rapids	4	17	14	7	21
Drug Court - Phase 3 - Coralville	4	13	16	1	17
Drug Court - Phase 4 - Cedar Rapids	5	14	14	6	19
Drug Court - Phase 4 - Coralville	4	11	12	3	15
Drug Court - Phase 5 - Cedar Rapids	6	11	14	3	17
Drug Court - Phase 5 - Coralville	2	12	12	2	14
Drug Court - Phase 6 Continuing Care - Cedar Rapids	8	13	9	12	21
Drug Court - Phase 6 Continuing Care - Coralville	4	9	7	6	13
Drug Court - Pre-Placement - Cedar Rapids	17	48	45	22	65
Drug Court - Pre-Placement - Coralville	3	26	22	7	29
Dual Diagnosis - Education	16	20	27	9	36
Dual Diagnosis - Group Therapy/Process	16	20	27	9	36
Dual Diagnosis Screening	0	5	4	1	5
Employment Solutions/Simulation	22	14	21	14	36
Family Team Meetings - Cedar Rapids	5	7	8	4	12

INTERVENTIONS (INTERNAL) – continued

Internal Intervention	Active at Start	New Admits	Closures	Active at End	Offenders Served
Family Team Meetings - Coralville	3	0	1	2	3
Federal Relapse Prevention - Cedar Rapids	13	36	39	10	49
Financial Management-Cedar Rapids	0	35	28	7	35
Grief/Loss Group	4	2	2	4	6
Individual DCS Agent Session-Cedar Rapids	23	6	11	17	29
Individual DCS Agent Session-Coralville	9	9	5	13	18
Individual DCS Agent Session - Tama-Iowa-Benton Counties	9	11	3	16	20
Individual DCS SOP Agent Session - Cedar Rapids	4	0	3	2	4
Mental Health Re-Entry Transition - Cedar Rapids	2	42	38	7	44
Mental Health Screening (Pretrial Level Only) - Cedar Rapids	0	62	62	0	62
Monitoring & Maintenance Program Orientation Group - CR	2	217	219	0	219
Moving On Group - Cedar Rapids	7	30	27	11	37
Moving On Group - Coralville	6	0	6	0	6
Sex Offender Low Functioning Treatment Group-Cedar Rapids	10	13	9	14	23
Sex Offender Low Functioning Treatment Group - Coralville	1	2	1	2	3
Sex Offender Maintenance Polygraph - Cedar Rapids	0	58	58	0	58
Sex Offender Maintenance Polygraph - Coralville	0	18	18	00	18
Sex Offender Maintenance Treatment Group - Cedar Rapids	23	15	13	32	38
Sex Offender Maintenance Treatment Group - Coralville	13	16	7	22	29
Sex Offender Maintenance Treatment Group - Toledo	3	0	0	3	3
Sex Offender Psychosexual Evaluation - Cedar Rapids	1	0	0	1	1
Sex Offender Sexual History Polygraph - Cedar Rapids	0	24	24	0	24
Sex Offender Sexual History Polygraph - Coralville	0	2	2	0	2
Sex Offender Specific Issue Polygraph - Cedar Rapids	0	4	4	0	4
Sex Offender Specific Issue Polygraph - Coralville	0	1	1	0	1
Sex Offender Treatment Group - Cedar Rapids	44	41	36	54	85
Sex Offender Treatment Group - Coralville	7	7	10	4	14
SSIC Aftercare - Cedar Rapids	2	15	11	6	17
SSIC Phase 1 & 2 - Cedar Rapids	17	72	64	24	89
SSIC Phase 3 - Cedar Rapids	0	38	36	3	38
STEPPS - Cedar Rapids	0	1	0	1	1
Substance Abuse Evaluation Program - Cedar Rapids	3	557	563	22	560
Substance Abuse Evaluation Program - Coralville	0	3	3	0	3
Substance Abuse Evaluation Program (Re-Eval)-Cedar Rapids	0	16	16	0	16
Talking Stick Circle - Cedar Rapids	1	0	1	0	1
TASC Substance Abuse Evaluation - Cedar Rapids	0	201	199	2	201
TASC Substance Abuse Evaluation - Coralville	0	70	63	6	70
Thinking For A Change - Cedar Rapids	15	65	68	19	80
Victim Impact Group - Cedar Rapids	0	16	16	0	16
WARN-Cedar Rapids	2	175	177	0	177
Internal Intervention Totals	508	2,798	2,765	692	3,306

INTERVENTIONS (INTERNAL) – continued

Female

Internal Intervention	Active at Start	New Admits	Closures	Active at End	Offenders Served
ANCHOR Outpatient Substance Abuse Services	0	1	1	0	1
BEP Intake - Cedar Rapids	0	3	3	0	3
BEP Intake - Coralville	0	1	1	0	1
BEP Moving On - Cedar Rapids	4	19	23	11	23
BEP Moving On - Coralville	2	28	18	17	30
Cognitive Aftercare - Cedar Rapids	1	3	2	2	4
Community Accountability Board - Cedar Rapids	6	3	7	3	9
Community Accountability Board - Coralville	3	1	2	2	4
DCS Adult Mentoring Program - Cedar Rapids	5	5	6	5	10
DCS Adult Mentoring Program - Coralville	2	0	1	1	2
DCS Alternative BEP - Cedar Rapids	1	1	1	2	2
DCS Alternative BEP - Toledo	0	0	1	0	0
DCS Employment Assistance - Cedar Rapids	1	0	1	0	1
DCS Employment Assistance - Coralville	2	4	2	4	6
Drug Court - Phase 1 - Cedar Rapids	0	10	10	0	10
Drug Court - Phase 1 - Coralville	1	3	3	1	4
Drug Court - Phase 2 - Cedar Rapids	2	8	7	3	10
Drug Court - Phase 2 - Coralville	0	3	2	1	3
Drug Court - Phase 3 - Cedar Rapids	0	5	3	2	5
Drug Court - Phase 3 - Coralville	0	1	1	0	1
Drug Court - Phase 4 - Cedar Rapids	2	3	4	1	5
Drug Court - Phase 5 - Cedar Rapids	0	4	2	2	4
Drug Court - Phase 5 - Coralville	1	0	1	0	1
Drug Court - Phase 6 Continuing Care - Cedar Rapids	2	2	3	1	4
Drug Court - Phase 6 Continuing Care - Coralville	1	0	1	0	1
Drug Court - Pre-Placement - Cedar Rapids	6	16	17	7	22
Drug Court - Pre-Placement - Coralville	0	5	3	2	5
Dual Diagnosis - Education	11	9	14	6	20
Dual Diagnosis - Group Therapy/Process	11	9	14	6	20
Dual Diagnosis Screening	0	2	1	1	2
Employment Solutions/Simulation	12	2	7	6	14
Family Team Meetings - Cedar Rapids	1	5	4	2	6
Family Team Meetings - Coralville	2	0	0	2	2
Federal Relapse Prevention - Cedar Rapids	0	3	3	0	3
Financial Management-Cedar Rapids	0	18	14	4	18
Grief/Loss Group	2	0	0	2	2
Individual DCS Agent Session-Cedar Rapids	1	1	0	2	2
Individual DCS Agent Session - Tama-Iowa-Benton Counties	2	1	0	3	3
Mental Health Re-Entry Transition - Cedar Rapids	0	8	8	1	8
Mental Health Screening (Pretrial Level Only) - Cedar Rapids	0	17	17	0	17
Monitoring & Maintenance Program Orientation Group - CR	0	72	72	0	72
Moving On Group - Cedar Rapids	7	30	27	11	37
Moving On Group - Coralville	6	0	6	0	6
Sex Offender Maintenance Polygraph - Cedar Rapids	0	1	1	0	1
Sex Offender Sexual History Polygraph - Cedar Rapids	0	1	1	0	1
Sex Offender Treatment Group - Cedar Rapids	1	0	2	0	1

Interventions (Internal) – continued

Female (continued)

Internal Intervention	Active at Start	New Admits	Closures	Active at End	Offenders Served
SSIC Aftercare - Cedar Rapids	0	4	4	0	4
SSIC Phase 1 & 2 - Cedar Rapids	2	15	11	6	17
SSIC Phase 3 - Cedar Rapids	0	8	8	0	8
STEPPS - Cedar Rapids	0	1	0	1	1
Substance Abuse Evaluation Program - Cedar Rapids	1	163	163	8	164
Substance Abuse Evaluation Program - Coralville	0	1	1	0	1
Substance Abuse Evaluation Program (Re-Eval) - CR	0	4	4	0	4
TASC Substance Abuse Evaluation - Cedar Rapids	0	32	31	1	32
TASC Substance Abuse Evaluation - Coralville	0	16	13	3	16
Victim Impact Group - Cedar Rapids	0	3	3	0	3
WARN-Cedar Rapids	1	20	21	0	21
Internal Intervention Totals	102	575	576	132	677

Male

Internal Intervention	Active at Start	New Admits	Closures	Active at End	Offenders Served
Accountability Group - Coralville	6	7	11	4	13
Accountability Group - Cedar Rapids	12	30	20	22	42
ACTV: Achieving Change thru Value-Based Behavior-CR	10	112	96	43	122
ACTV: Achieving Change thru Value-Based Behavior-Coralville	7	96	73	43	103
ACTV: Achieving Change thru Value-Based Behavior - Toledo	0	7	7	0	7
ANCHOR Outpatient Substance Abuse Services	4	8	8	4	12
Batterer's Education Program - Cedar Rapids	12	80	96	29	92
Batterer's Education Program - Coralville	24	50	85	7	74
BEP Intake - Cedar Rapids	0	44	44	0	44
BEP Intake - Coralville	0	9	9	0	9
Circle of Support/Accountability - Cedar Rapids	3	6	2	7	9
Circle of Support/Accountability - Coralville	0	1	0	1	1
Cognitive Aftercare - Cedar Rapids	8	24	24	8	32
Community Accountability Board - Cedar Rapids	7	14	7	13	21
Community Accountability Board - Coralville	5	2	3	4	7
DCS Adult Mentoring Program - Cedar Rapids	7	5	6	7	12
DCS Adult Mentoring Program - Coralville	6	0	4	2	6
DCS Alternative BEP - Cedar Rapids	0	1	0	2	1
DCS Employment Assistance - Cedar Rapids	3	3	2	4	6
DCS Employment Assistance - Coralville	9	13	9	12	22
DCS Psychological Evaluation - Cedar Rapids	0	2	1	1	2
Drug Court - Phase 1 - Cedar Rapids	2	23	20	7	25
Drug Court - Phase 1 - Coralville	4	13	15	2	17
Drug Court - Phase 2 - Cedar Rapids	5	14	16	3	19
Drug Court - Phase 2 - Coralville	4	17	16	5	21
Drug Court - Phase 3 - Cedar Rapids	4	12	11	5	16
Drug Court - Phase 3 - Coralville	4	12	15	1	16
Drug Court - Phase 4 - Cedar Rapids	3	11	10	5	14
Drug Court - Phase 4 - Coralville	4	11	12	3	15
Drug Court - Phase 5 - Cedar Rapids	6	7	12	1	13

Interventions (Internal) – continued

Male (continued)

Internal Intervention	Active at Start	New Admits	Closures	Active at End	Offenders Served
Drug Court - Phase 5 - Coralville	1	12	11	2	13
Drug Court - Phase 6 Continuing Care - Cedar Rapids	6	11	6	11	17
Drug Court - Phase 6 Continuing Care - Coralville	3	9	6	6	12
Drug Court - Pre-Placement - Cedar Rapids	11	32	28	15	43
Drug Court - Pre-Placement - Coralville	3	21	19	5	24
Dual Diagnosis - Education	5	11	13	3	16
Dual Diagnosis - Group Therapy/Process	5	11	13	3	16
Dual Diagnosis Screening	0	3	3	0	3
Employment Solutions/Simulation	10	12	14	8	22
Family Team Meetings - Cedar Rapids	4	2	4	2	6
Family Team Meetings - Coralville	1	0	1	0	1
Federal Relapse Prevention - Cedar Rapids	13	33	36	10	46
Financial Management-Cedar Rapids	0	17	14	3	17
Grief/Loss Group	2	2	2	2	4
Individual DCS Agent Session-Cedar Rapids	22	5	11	15	27
Individual DCS Agent Session-Coralville	9	9	5	13	18
Individual DCS Agent Session - Tama-Iowa-Benton Counties	7	10	3	13	17
Individual DCS SOP Agent Session - Cedar Rapids	4	0	3	1	4
Mental Health Re-Entry Transition - Cedar Rapids	2	34	30	6	36
Mental Health Screening (Pretrial Level Only) - CR	0	45	45	0	45
Monitoring & Maintenance Program Orientation Group-CR	2	145	147	0	147
Sex Offender Low Functioning Treatment Group- CR	10	13	9	14	23
Sex Offender Low Functioning Treatment Group-Coralville	1	2	1	2	3
Sex Offender Maintenance Polygraph - Cedar Rapids	0	57	57	0	57
Sex Offender Maintenance Polygraph - Coralville	0	18	18	0	18
Sex Offender Maintenance Treatment Group - CR	23	15	13	32	38
Sex Offender Maintenance Treatment Group - Coralville	13	16	7	22	29
Sex Offender Maintenance Treatment Group - Toledo	3	0	0	3	3
Sex Offender Psychosexual Evaluation - Cedar Rapids	1	0	0	1	1
Sex Offender Sexual History Polygraph - Cedar Rapids	0	23	23	0	23
Sex Offender Sexual History Polygraph - Coralville	0	2	2	0	2
Sex Offender Specific Issue Polygraph - Cedar Rapids	0	4	4	0	4
Sex Offender Specific Issue Polygraph - Coralville	0	1	1	0	1
Sex Offender Treatment Group - Cedar Rapids	43	41	34	54	84
Sex Offender Treatment Group - Coralville	7	7	10	4	14
SSIC Aftercare - Cedar Rapids	2	11	7	6	13
SSIC Phase 1 & 2 - Cedar Rapids	15	57	53	18	72
SSIC Phase 3 - Cedar Rapids	0	30	28	3	30
Substance Abuse Evaluation Program - Cedar Rapids	2	394	400	14	396
Substance Abuse Evaluation Program - Coralville	0	2	2	0	2
Substance Abuse Evaluation Program (Re-Eval) - CR	0	12	12	0	12
Talking Stick Circle - Cedar Rapids	1	0	1	0	1
TASC Substance Abuse Evaluation - Cedar Rapids	0	169	168	1	169
TASC Substance Abuse Evaluation - Coralville	0	54	50	3	54
Thinking For A Change - Cedar Rapids	15	65	68	19	80
Victim Impact Group - Cedar Rapids	0	13	13	0	13
WARN-Cedar Rapids	1	155	156	0	156
Internal Intervention Totals	406	2,219	2,185	559	2,625

Interventions (Internal) – continued

Unknown

Internal Intervention	Active at Start	New Admits	Closures	Active at End	Offenders Served
BEP Intake - Cedar Rapids	0	2	2	0	2
BEP Moving On - Cedar Rapids	0	2	2	0	2
Individual DCS SOP Agent Session - Cedar Rapids	0	0	0	1	0
Internal Intervention Totals	0	4	4	1	4

By Race – Ethnicity: H = Hispanic; NH = Non-Hispanic; W = White; B = Black;
A/PI = Asian/Pacific Islander; AI/AN = American Indian/Alaska Native; Unk = Unknown

AI/AN - H

Internal Intervention	Active at Start	New Admits	Closures	Active at End	Offenders Served
ACTV: Achieving Change through Value-Based Behavior - Toledo	0	1	1	0	1
Sex Offender Maintenance Polygraph - Cedar Rapids	0	1	1	0	1
Sex Offender Sexual History Polygraph - Cedar Rapids	0	1	1	0	1
Sex Offender Treatment Group - Cedar Rapids	1	0	0	1	1
TASC Substance Abuse Evaluation - Cedar Rapids	0	1	1	0	1
Thinking For A Change - Cedar Rapids	1	0	1	0	1
Internal Intervention Totals	2	4	5	1	6

AI/AN - NH

Internal Intervention	Active at Start	New Admits	Closures	Active at End	Offenders Served
ACTV: Achieving Change thru Value-Based Behavior - Toledo	0	2	2	0	2
Batterer's Education Program - Cedar Rapids	1	0	2	0	1
BEP Intake - Cedar Rapids	0	1	1	0	1
BEP Moving On - Cedar Rapids	0	1	1	0	1
Community Accountability Board - Cedar Rapids	0	1	0	1	1
Drug Court - Phase 1 - Cedar Rapids	0	1	0	1	1
Drug Court - Pre-Placement - Cedar Rapids	0	1	1	0	1
Dual Diagnosis - Education	1	0	1	0	1
Dual Diagnosis - Group Therapy/Process	1	0	1	0	1
Employment Solutions/Simulation	12	8	13	6	20
Federal Relapse Prevention - Cedar Rapids	0	1	1	0	1
Mental Health Screening (Pretrial Level Only) - Cedar Rapids	0	1	1	0	1
Monitoring & Maintenance Program Orientation Group - CR	0	1	1	0	1
Sex Offender Maintenance Treatment Group - Toledo	1	0	0	1	1
Sex Offender Sexual History Polygraph - Cedar Rapids	0	2	2	0	2
Sex Offender Treatment Group - Cedar Rapids	1	1	2	1	2
SSIC Phase 1 & 2 - Cedar Rapids	3	7	8	2	10
SSIC Phase 3 - Cedar Rapids	0	5	5	0	5
Substance Abuse Evaluation Program - Cedar Rapids	0	2	3	0	2
Talking Stick Circle - Cedar Rapids	1	0	1	0	1
TASC Substance Abuse Evaluation - Cedar Rapids	0	3	3	0	3
Thinking For A Change - Cedar Rapids	0	1	0	1	1
WARN-Cedar Rapids	0	8	8	0	8
Internal Intervention Totals	21	47	57	13	68

Interventions (Internal) – continued

A/PI - NH

Internal Intervention	Active at Start	New Admits	Closures	Active at End	Offenders Served
ACTV: Achieving Change thru Value-Based Behavior -Coralville	0	0	1	0	0
Batterer's Education Program - Coralville	0	0	1	0	0
BEP Moving On - Coralville	0	1	0	1	1
Dual Diagnosis - Education	1	0	1	0	1
Dual Diagnosis - Group Therapy/Process	1	0	1	0	1
Federal Relapse Prevention - Cedar Rapids	0	1	1	0	1
Financial Management-Cedar Rapids	0	1	1	0	1
Mental Health Re-Entry Transition - Cedar Rapids	0	0	1	0	0
Monitoring & Maintenance Program Orientation Group - CR	0	1	1	0	1
Substance Abuse Evaluation Program - Cedar Rapids	0	5	5	0	5
WARN-Cedar Rapids	0	1	1	0	1
Internal Intervention Totals	2	10	14	1	12

B – H

Internal Intervention	Active at Start	New Admits	Closures	Active at End	Offenders Served
Federal Relapse Prevention - Cedar Rapids	0	1	0	1	1
Mental Health Re-Entry Transition - Cedar Rapids	0	1	1	0	1
Monitoring & Maintenance Program Orientation Group - CR	0	1	1	0	1
WARN-Cedar Rapids	0	1	1	0	1
Internal Intervention Totals	0	4	3	1	4

B – NH

Internal Intervention	Active at Start	New Admits	Closures	Active at End	Offenders Served
Accountability Group - Coralville	1	3	4	0	4
Accountability Group - Cedar Rapids	2	1	1	2	3
ACTV: Achieving Change thru Value-Based Behavior - CR	2	32	28	9	34
ACTV: Achieving Change thru Value-Based Behavior - Coralville	2	45	29	21	47
ANCHOR Outpatient Substance Abuse Services	2	0	1	1	2
Batterer's Education Program - Cedar Rapids	3	25	31	9	28
Batterer's Education Program - Coralville	11	25	44	1	36
BEP Intake - Cedar Rapids	0	13	13	0	13
BEP Intake - Coralville	0	3	3	0	3
BEP Moving On - Cedar Rapids	2	4	7	2	6
BEP Moving On - Coralville	1	8	4	7	9
Circle of Support/Accountability - Cedar Rapids	2	2	2	2	4
Cognitive Aftercare - Cedar Rapids	0	7	6	1	7
Community Accountability Board - Cedar Rapids	1	4	2	3	5
Community Accountability Board - Coralville	1	0	0	1	1
DCS Adult Mentoring Program - Cedar Rapids	2	1	2	2	3
DCS Adult Mentoring Program - Coralville	2	0	1	1	2

Interventions (Internal) – continued

B – NH (continued)

Internal Intervention	Active at Start	New Admits	Closures	Active at End	Offenders Served
DCS Employment Assistance - Coralville	7	10	5	11	17
DCS Psychological Evaluation - Cedar Rapids	0	1	0	1	1
Drug Court - Phase 1 - Cedar Rapids	0	4	4	0	4
Drug Court - Phase 1 - Coralville	2	8	8	2	10
Drug Court - Phase 2 - Cedar Rapids	0	2	2	0	2
Drug Court - Phase 2 - Coralville	0	8	6	2	8
Drug Court - Phase 3 - Cedar Rapids	0	2	1	1	2
Drug Court - Phase 3 - Coralville	1	4	4	1	5
Drug Court - Phase 4 - Cedar Rapids	0	1	2	0	1
Drug Court - Phase 4 - Coralville	1	2	3	0	3
Drug Court - Phase 5 - Cedar Rapids	2	1	2	1	3
Drug Court - Phase 5 - Coralville	0	3	3	0	3
Drug Court - Phase 6 Continuing Care - Cedar Rapids	1	2	1	2	3
Drug Court - Phase 6 Continuing Care - Coralville	3	3	5	1	6
Drug Court - Pre-Placement - Cedar Rapids	3	6	7	3	9
Drug Court - Pre-Placement - Coralville	1	11	9	3	12
Dual Diagnosis - Education	0	4	4	0	4
Dual Diagnosis - Group Therapy/Process	0	4	4	0	4
Employment Solutions/Simulation	3	0	3	0	3
Family Team Meetings - Coralville	3	0	1	2	3
Federal Relapse Prevention - Cedar Rapids	4	7	9	2	11
Financial Management-Cedar Rapids	0	8	7	1	8
Grief/Loss Group	0	1	1	0	1
Individual DCS Agent Session-Cedar Rapids	8	3	3	7	11
Individual DCS Agent Session-Coralville	5	3	2	6	8
Mental Health Re-Entry Transition - Cedar Rapids	1	14	13	2	15
Mental Health Screening (Pretrial Level Only) - Cedar Rapids	0	9	9	0	9
Monitoring & Maintenance Program Orientation Group - CR	0	20	20	0	20
Moving On Group - Cedar Rapids	1	5	4	2	6
Moving On Group - Coralville	1	0	1	0	1
Sex Offender Low Functioning Treatment Group - CR	0	1	1	0	1
Sex Offender Low Functioning Treatment Group - Coralville	0	1	0	1	1
Sex Offender Maintenance Polygraph - Cedar Rapids	0	6	6	0	6
Sex Offender Maintenance Polygraph - Coralville	0	2	2	0	2
Sex Offender Maintenance Treatment Group - Cedar Rapids	0	3	1	2	3
Sex Offender Maintenance Treatment Group - Coralville	1	3	1	3	4
Sex Offender Sexual History Polygraph - Cedar Rapids	0	1	1	0	1
Sex Offender Specific Issue Polygraph - Cedar Rapids	0	2	2	0	2
Sex Offender Treatment Group - Cedar Rapids	7	4	6	5	11
SSIC Aftercare - Cedar Rapids	1	4	4	1	5
SSIC Phase 1 & 2 - Cedar Rapids	2	9	9	2	11
SSIC Phase 3 - Cedar Rapids	0	2	2	1	2
Substance Abuse Evaluation Program - Cedar Rapids	0	63	60	5	63
Substance Abuse Evaluation Program - Coralville	0	1	1	0	1
TASC Substance Abuse Evaluation - Cedar Rapids	0	48	47	1	48
TASC Substance Abuse Evaluation - Coralville	0	30	28	1	30
Thinking For A Change - Cedar Rapids	1	10	11	2	11
Victim Impact Group - Cedar Rapids	0	5	5	0	5
WARN-Cedar Rapids	0	46	46	0	46
Internal Intervention Totals	93	560	554	136	653

Interventions (Internal) – continued

Unk - NH

Internal Intervention	Active at Start	New Admits	Closures	Active at End	Offenders Served
BEP Intake - Cedar Rapids	0	2	2	0	2
BEP Moving On - Cedar Rapids	0	2	2	0	2
Individual DCS SOP Agent Session - Cedar Rapids	0	0	0	1	0
Substance Abuse Evaluation Program - Cedar Rapids	0	1	1	0	1
Internal Intervention Totals	0	5	5	1	5

W – H

Internal Intervention	Active at Start	New Admits	Closures	Active at End	Offenders Served
Accountability Group - Cedar Rapids	0	1	1	0	1
ACTV: Achieving Change thru Value-Based Behavior - CR	0	5	3	2	5
ACTV: Achieving Change thru Value-Based Behavior - Coralville	0	6	5	1	6
ACTV: Achieving Change through Value-Based Behavior - Toledo	0	1	1	0	1
Batterer's Education Program - Cedar Rapids	1	2	5	0	3
Batterer's Education Program - Coralville	3	2	6	0	5
BEP Intake - Cedar Rapids	0	1	1	0	1
BEP Moving On - Cedar Rapids	0	1	0	1	1
BEP Moving On - Coralville	0	2	3	0	2
Cognitive Aftercare - Cedar Rapids	4	1	4	1	5
Community Accountability Board - Coralville	2	0	1	1	2
DCS Adult Mentoring Program - Cedar Rapids	1	1	1	1	2
DCS Employment Assistance - Coralville	1	1	0	2	2
Drug Court - Phase 1 - Cedar Rapids	0	2	2	0	2
Drug Court - Phase 2 - Cedar Rapids	0	2	2	0	2
Drug Court - Phase 3 - Cedar Rapids	0	1	0	1	1
Drug Court - Phase 5 - Cedar Rapids	1	0	1	0	1
Drug Court - Phase 6 Continuing Care - Cedar Rapids	0	1	0	1	1
Drug Court - Pre-Placement - Cedar Rapids	0	3	4	0	3
Drug Court - Pre-Placement - Coralville	0	1	1	0	1
Dual Diagnosis - Education	1	2	2	1	3
Dual Diagnosis - Group Therapy/Process	1	2	2	1	3
Employment Solutions/Simulation	1	1	1	1	2
Family Team Meetings - Cedar Rapids	0	1	1	0	1
Federal Relapse Prevention - Cedar Rapids	0	4	3	1	4
Financial Management-Cedar Rapids	0	1	1	0	1
Individual DCS Agent Session-Coralville	2	0	2	0	2
Mental Health Re-Entry Transition - Cedar Rapids	0	1	1	0	1
Mental Health Screening (Pretrial Level Only) - Cedar Rapids	0	2	2	0	2
Monitoring & Maintenance Program Orientation Group - CR	0	8	8	0	8
Moving On Group - Cedar Rapids	0	3	2	2	3
Sex Offender Low Functioning Treatment Group - CR	2	0	0	2	2
Sex Offender Maintenance Polygraph - Cedar Rapids	0	1	1	0	1
Sex Offender Maintenance Treatment Group - Cedar Rapids	0	1	1	0	1
Sex Offender Sexual History Polygraph - Cedar Rapids	0	1	1	0	1
Sex Offender Treatment Group - Cedar Rapids	1	1	0	2	2
SSIC Phase 1 & 2 - Cedar Rapids	1	0	1	0	1

Interventions (Internal) – continued

W – H (continued)

Internal Intervention	Active at Start	New Admits	Closures	Active at End	Offenders Served
SSIC Phase 3 - Cedar Rapids	0	1	1	0	1
Substance Abuse Evaluation Program - Cedar Rapids	0	16	18	0	16
TASC Substance Abuse Evaluation - Cedar Rapids	0	5	5	0	5
TASC Substance Abuse Evaluation - Coralville	0	2	2	0	2
Thinking For A Change - Cedar Rapids	0	2	2	0	2
WARN-Cedar Rapids	0	2	2	0	2
Internal Intervention Totals	22	91	100	21	113

W - NH

Internal Intervention	Active at Start	New Admits	Closures	Active at End	Offenders Served
Accountability Group - Coralville	5	4	7	4	9
Accountability Group - Cedar Rapids	10	28	18	20	38
ACTV: Achieving Change thru Value-Based Behavior – CR	8	75	65	32	83
ACTV: Achieving Change through Value-Based Behavior - Coralville	5	45	38	21	50
ACTV: Achieving Change through Value-Based Behavior - Toledo	0	3	3	0	3
ANCHOR Outpatient Substance Abuse Services	2	9	8	3	11
Batterer's Education Program - Cedar Rapids	7	53	58	20	60
Batterer's Education Program - Coralville	10	23	34	6	33
BEP Intake - Cedar Rapids	0	32	32	0	32
BEP Intake - Coralville	0	7	7	0	7
BEP Moving On - Cedar Rapids	2	13	15	8	15
BEP Moving On - Coralville	1	17	11	9	18
Circle of Support/Accountability - Cedar Rapids	1	4	0	5	5
Circle of Support/Accountability - Coralville	0	1	0	1	1
Cognitive Aftercare - Cedar Rapids	5	19	16	8	24
Community Accountability Board - Cedar Rapids	12	12	12	12	24
Community Accountability Board - Coralville	5	3	4	4	8
DCS Adult Mentoring Program - Cedar Rapids	9	8	9	9	17
DCS Adult Mentoring Program - Coralville	6	0	4	2	6
DCS Alternative BEP - Cedar Rapids	1	2	1	4	3
DCS Alternative BEP - Toledo	0	0	1	0	0
DCS Employment Assistance - Cedar Rapids	4	3	3	4	7
DCS Employment Assistance - Coralville	3	6	6	3	9
DCS Psychological Evaluation - Cedar Rapids	0	1	1	0	1
Drug Court - Phase 1 - Cedar Rapids	2	26	24	6	28
Drug Court - Phase 1 - Coralville	3	8	10	1	11
Drug Court - Phase 2 - Cedar Rapids	7	18	19	6	25
Drug Court - Phase 2 - Coralville	4	12	12	4	16
Drug Court - Phase 3 - Cedar Rapids	4	14	13	5	18
Drug Court - Phase 3 - Coralville	3	9	12	0	12
Drug Court - Phase 4 - Cedar Rapids	5	13	12	6	18
Drug Court - Phase 4 - Coralville	3	9	9	3	12
Drug Court - Phase 5 - Cedar Rapids	3	10	11	2	13
Drug Court - Phase 5 - Coralville	2	9	9	2	11
Drug Court - Phase 6 Continuing Care - Cedar Rapids	7	10	8	9	17

Interventions (Internal) – continued

W – NH (continued)

Internal Intervention	Active at Start	New Admits	Closures	Active at End	Offenders Served
Drug Court - Phase 6 Continuing Care - Coralville	1	6	2	5	7
Drug Court - Pre-Placement - Cedar Rapids	14	38	33	19	52
Drug Court - Pre-Placement - Coralville	2	14	12	4	16
Dual Diagnosis - Education	13	14	19	8	27
Dual Diagnosis - Group Therapy/Process	13	14	19	8	27
Dual Diagnosis Screening	0	5	4	1	5
Employment Solutions/Simulation	6	5	4	7	11
Family Team Meetings - Cedar Rapids	5	6	7	4	11
Federal Relapse Prevention - Cedar Rapids	9	22	25	6	31
Financial Management-Cedar Rapids	0	25	19	6	25
Grief/Loss Group	4	1	1	4	5
Individual DCS Agent Session-Cedar Rapids	15	3	8	10	18
Individual DCS Agent Session-Coralville	2	6	1	7	8
Individual DCS Agent Session - Tama-Iowa-Benton Counties	9	11	3	16	20
Individual DCS SOP Agent Session - Cedar Rapids	4	0	3	1	4
Mental Health Re-Entry Transition - Cedar Rapids	1	26	22	5	27
Mental Health Screening (Pretrial Level Only) - Cedar Rapids	0	50	50	0	50
Monitoring & Maintenance Program Orientation Group - CR	2	186	188	0	188
Moving On Group - Cedar Rapids	6	22	21	7	28
Moving On Group - Coralville	5	0	5	0	5
Sex Offender Low Functioning Treatment Group - CR	8	12	8	12	20
Sex Offender Low Functioning Treatment Group - Coralville	1	1	1	1	2
Sex Offender Maintenance Polygraph - Cedar Rapids	0	50	50	0	50
Sex Offender Maintenance Polygraph - Coralville	0	16	16	0	16
Sex Offender Maintenance Treatment Group - Cedar Rapids	23	11	11	30	34
Sex Offender Maintenance Treatment Group - Coralville	12	13	6	19	25
Sex Offender Maintenance Treatment Group - Toledo	2	0	0	2	2
Sex Offender Psychosexual Evaluation - Cedar Rapids	1	0	0	1	1
Sex Offender Sexual History Polygraph - Cedar Rapids	0	19	19	0	19
Sex Offender Sexual History Polygraph - Coralville	0	2	2	0	2
Sex Offender Specific Issue Polygraph - Cedar Rapids	0	2	2	0	2
Sex Offender Specific Issue Polygraph - Coralville	0	1	1	0	1
Sex Offender Treatment Group - Cedar Rapids	34	35	28	45	69
Sex Offender Treatment Group - Coralville	7	7	10	4	14
SSIC Aftercare - Cedar Rapids	1	11	7	5	12
SSIC Phase 1 & 2 - Cedar Rapids	11	56	46	20	67
SSIC Phase 3 - Cedar Rapids	0	30	28	2	30
STEPPS - Cedar Rapids	0	1	0	1	1
Substance Abuse Evaluation Program - Cedar Rapids	3	470	476	17	473
Substance Abuse Evaluation Program - Coralville	0	2	2	0	2
Substance Abuse Evaluation Program (Re-Eval) - CR	0	16	16	0	16
TASC Substance Abuse Evaluation - Cedar Rapids	0	144	143	1	144
TASC Substance Abuse Evaluation - Coralville	0	38	33	5	38
Thinking For A Change - Cedar Rapids	13	52	54	16	65
Victim Impact Group - Cedar Rapids	0	11	11	0	11
WARN-Cedar Rapids	2	117	119	0	119
Internal Intervention Totals	368	2,077	2,027	518	2,445

Interventions (Internal) Closures

Intervention / Closure Category	Administrative	Intermediate Sanction	Successful	Unsuccessful	Totals
Accountability Group - Coralville	6	0	2	3	11
Accountability Group - Cedar Rapids	8	3	5	4	20
ACTV - Cedar Rapids	10	0	52	34	96
ACTV - Coralville	7	0	46	20	73
ACTV - Toledo	0	0	5	2	7
ANCHOR Outpatient Sub, Abuse	1	0	6	2	9
Batterer's Education Program - CR	21	0	41	34	96
Batterer's Education Program - Coralville	42	1	30	12	85
BEP Intake - Cedar Rapids	0	0	49	0	49
BEP Intake - Coralville	0	0	10	0	10
BEP Moving On - Cedar Rapids	2	0	21	2	25
BEP Moving On - Coralville	1	0	15	2	18
Circle of Support/Accountability – CR	0	0	2	0	2
Cognitive Aftercare - Cedar Rapids	9	4	11	2	26
Community Acc'tability Board – CR	2	2	8	2	14
Community Acc'tability Board -Coralville	0	0	5	0	5
DCS Adult Mentoring Program – CR	2	1	5	4	12
DCS Adult Mentoring Prog.-Coralville	2	0	3	0	5
DCS Alternative BEP - Cedar Rapids	0	0	1	0	1
DCS Alternative BEP - Toledo	0	0	1	0	1
DCS Employment Assistance - CR	3	0	0	0	3
DCS Employment Assistance-Coralville	1	0	6	4	11
DCS Psychological Evaluation - CR	0	0	1	0	1
Drug Court - Phase 1 - Cedar Rapids	0	0	22	8	30
Drug Court - Phase 1 - Coralville	0	0	16	2	18
Drug Court - Phase 2 - Cedar Rapids	0	0	17	6	23
Drug Court - Phase 2 - Coralville	2	0	13	3	18
Drug Court - Phase 3 - Cedar Rapids	0	0	13	1	14
Drug Court - Phase 3 - Coralville	0	1	11	4	16
Drug Court - Phase 4 - Cedar Rapids	0	0	12	2	14
Drug Court - Phase 4 - Coralville	0	0	12	0	12
Drug Court - Phase 5 - Cedar Rapids	0	0	13	1	14
Drug Court - Phase 5 - Coralville	1	2	9	0	12
Drug Court - Phase 6 Cont Care – CR	0	0	8	1	9
Drug Court-Phase 6 Cont Care-Coralville	0	0	5	2	7
Drug Court - Pre-Placement - CR	14	0	26	5	45
Drug Court-Pre-Placement-Coralville	6	0	12	4	22
Dual Diagnosis - Education	6	12	7	2	27
Dual Diagnosis Grp Therapy/Process	6	12	7	2	27
Dual Diagnosis Screening	2	0	2	0	4
Employment Solutions/Simulation	0	3	12	6	21
Family Team Meetings-Cedar Rapids	3	0	3	2	8
Family Team Meetings - Coralville	0	0	1	0	1
Federal Relapse Prevention - CR	4	3	31	1	39

Interventions (Internal) Closures – continued

Intervention / Closure Category	Administrative	Intermediate Sanction	Successful	Unsuccessful	Totals
Financial Management-Cedar Rapids	2	1	16	9	28
Grief/Loss Group	0	0	2	0	2
Individual DCS Agent Session-CR	3	0	6	2	11
Individual DCS Agent Session - Coralville	2	0	3	0	5
Ind DCS Agent Session-Tama-Iowa-Benton	0	1	0	2	3
Individual DCS SOP Agent Session–CR	0	0	3	0	3
Mental Health Re-Entry Transition-CR	18	0	19	1	38
Mental Health Screening (PTR Level) - CR	1	0	61	0	62
MMP Group - Cedar Rapids	4	0	214	1	219
Moving On Group - Cedar Rapids	2	2	15	8	27
Moving On Group - Coralville	0	0	5	1	6
SO Low Functioning Trtmt Group - CR	4	4	0	1	9
SO Low Functioning Trtmt - Coralville	0	0	1	0	1
SO Maintenance Polygraph - CR	0	0	58	0	58
SO Maintenance Polygraph - Coralville	0	0	18	0	18
SO Maintenance Treatment - CR	6	1	6	0	13
SO Maintenance Treatment - Coralville	2	0	4	1	7
SO Sexual History Polygraph - CR	0	0	24	0	24
SO Sexual History Polygraph-Coralville	0	0	2	0	2
SO Specific Issue Polygraph - CR	0	0	4	0	4
SO Specific Issue Polygraph-Coralville	0	0	1	0	1
SO Treatment Group - Cedar Rapids	9	7	17	3	36
SO Treatment Group - Coralville	3	0	7	0	10
SSIC Aftercare - Cedar Rapids	6	2	2	1	11
SSIC Phase 1 & 2 - Cedar Rapids	2	9	43	10	64
SSIC Phase 3 - Cedar Rapids	0	1	35	0	36
Sub Abuse Evaluation Program – CR	1	2	350	210	563
Sub Abuse Eval. Program - Coralville	0	0	2	1	3
Sub Abuse Eval. (Re-Eval) – CR	0	0	14	2	16
Talking Stick Circle - Cedar Rapids	0	0	0	1	1
TASC Substance Abuse Eval - CR	12	3	171	13	199
TASC Sub Abuse Eval - Coralville	2	0	52	9	63
Thinking For A Change - Cedar Rapids	10	7	35	16	68
Victim Impact Group - Cedar Rapids	2	2	4	8	16
WARN-Cedar Rapids	3	0	169	5	177
Closure Type Totals	255	86	1,940	484	2,765
Percentage	9.2%	3.1%	70.2%	17.5%	100%

PRESENTENCE INVESTIGATIONS

During FY'13 there were 799 Presentence Investigations completed.

NOTE: If the associated PSI charge was modified after the PSI was submitted, these reports reflect the modified charge.

Form Type	PSI Count	Percent	Final Work Unit	Long	Pre Plea	Post Conviction	Total
Long/Short	642	80.4%	Johnson County Pretrial/Presentence/Probation	182	9	19	210
Pre Plea	36	4.5%	Linn County Pretrial/Presentence/TASC/BEP	460	27	102	589
Post-Conviction	121	15.1%	Form Type Total	642	36	121	799
Total	799	100%					

Offense Type	Total	Percent
Violent	97	12.1%
Property	350	43.8%
Drug	211	26.4%
Public Order	136	17.0%
Other	5	0.6%
Total/Percentage	799	100%

Offense Class	Total	Percent
A Felony	2	0.3%
B Felony	16	2.0%
C Felony	161	20.2%
D Felony	583	73.0%
Felony – Enhancement to Orig.	3	0.4%
Aggravated Misdemeanor	31	3.9%
Serious Misdemeanor	2	0.3%
Simple Misdemeanor	1	0.1%
Total/Percentage	799	100%

PRETRIAL INTERVIEWS

During FY'13 there 2,852 Pretrial Interviews conducted.

Work Unit	# of Interviews Conducted
Benton, Iowa, Tama County	316
Johnson County Field Serves	1,141
Linn & Jones County Probation/Parole	3
Linn County PTR/PSI/Probation/BEP	1,392
Total Interviews Conducted	2,852

OTHER SERVICES PROVIDED

Volunteer Assistance Program

Community Volunteers

There are over 4,000 individuals under Sixth District supervision, with more people being released all the time. These people have a variety of needs including: housing, job assistance, education, parenting, and developing supportive and pro-social relationships, to name a few. While corrections professionals can and do provide basic supervision, they have neither the resources nor time to provide everything people need to re-integrate successfully back into their communities. Without the support of community volunteers we will never be able to create the safe and peaceable communities we all desire.

Workplace Learning Connection

We work with Workplace Learning Connection providing high school students an opportunity to learn about the various career opportunities within our district. A staff panel is hosted one to two times a year based on student interest.

Interns

We provide internship opportunities for the undergraduate and graduate level students from at least 12 different local colleges and universities, including a few out-of-state institutions as well. The number of interns accepted each term varies depending on various factors like staff case loads, interns' number of hours required, projects available, and special events taking place.

Work Study Students

We have worked closely with Kirkwood Community College and Mt. Mercy University to host students that have been approved for federal work study dollars as part of their educational financial aid packet. This partnership has become a win-win-win for all parties involved as the students gain valuable real-world work experience; we have minimal to no cost while receiving an additional "staff" member; and the schools have an additional placement site to offer students.

ASSESSMENTS

During FY'13 there were a total of 12,304 assessments conducted.

Assessment Tool	# Submitted
ACUTE 2007	1,091
Colors	1
Court Ordered	298
Iowa Head Injury Screening Assessment	805
Iowa Risk Assessment	1,164
Iowa Risk Reassessment	2,913
ISORA	82
ISORA/Static-99-R Combined	58
Jesness	745
LSI-R	2,284
LSI-R Trailer Probation/Parole	28
OWI Continuum Worksheet II	72
Professional Judgment	756
Psychosexual Assessment	22
Sexual Violence Propensity-Female Offender	67
Sexual Violence Propensity Revised-Male Offender	464
Stable 2007	141
Static-99-R	56
TCU Drug	445
URICA	812
Total Assessments Conducted	12,304

REVOCATIONS

During FY'13 there were 131 probation revocations and 114 non-probation revocations.

Probation Revocations

By Work Unit:

Work Unit Name	Total Work Unit Revocations	Percentage
ANCHOR Center – Outpatient	32	24.4%
Benton, Iowa, Tama County Field Services	7	5.3%
Cedar Rapids - Gerald R Hinzman Residential Center	10	7.6%
Cedar Rapids - Lary A Nelson Residential Center	17	13.0%
Certified Officer Unit	21	16.0%
Coralville - Hope House Residential Center	8	6.1%
Johnson County Field Services	20	15.3%
Linn and Johnson County SOP	5	3.8%
Linn and Jones County Probation/Parole	10	7.6%
Linn County Pretrial/PSI/Probation	1	0.8%
Total PB Revocations/Percentage	131	100 %

By Race – Ethnicity: (% based on statewide total)

Race/Ethnicity	# of Revocations	%
White	84	7.6%
Black	44	13.4%
American Indian/Alaska Native	2	9.1%
Asian or Pacific Islander	1	5.9%
Total	131	

By Revocation Category/Reason:

Revocation Category Reason	6JD	%
1. New Fel/Agg Conv	61	46.6%
2. Other New Conv	40	30.5%
3. New Arrest	2	1.5%
4. New Arrest ICON	13	9.9%
5. Other Vio-No Arrest	15	11.5%
6. Other-No ROV Data	0	0.0%
Total/Percentage	131	100%

Revocations – continued

By Reason for Change:

Supervision Status Reason For Change	6JD	%
Discharge-Early Discharge	0	0.0%
Revoked	131	100%
Revocation Total/Percentage	131	100%

Violation Behavior Codes by Hierarchy	6JD	%
Violation of No Contact Order	2	13.3%
Illegal Activity Without Arrest	1	6.7%
Physical Abuse	1	6.7%
Escaped from Confinement/Custody	1	6.7%
Failure to Report/Return/Absconson	2	13.3%
Use/Possession of Alcohol or Drugs/Paraphernalia	5	33.3%
Possession of Contraband (non-weapon)	1	6.7%
Out of Place of Assignment/Unauthorized Location	1	6.7%
Terminated –Fail to Participate in Treatment	1	6.7%
Category 5 Total/Percentage	15	100%

Non-Probation Revocations

By Race/Ethnicity: (% based on statewide totals)

Race/Ethnicity	# of Revocations	%
White	69	7.4%
Black	39	12.7%
American Indian/Alaska Native	6	19.4%
Total	114	

By Revocation Category Reason/Supervision Status:

Revocation Category Reason/Supervision Status	Work Release	%	OWI Continuum	%	Special Sentence	%	Parole	%
1. New Fel/Agg Conv	1	1.6%	0	0%	1	10.0%	8	27.6%
2. Other New Conv	5	7.9%	1	8.3%	2	20.0%	7	24.1%
3. New Arrest	0	0%	0	0%	0	0%	1	3.4%
4. New Arrest ICON	4	6.3%	2	16.7%	1	10.0%	6	20.7%
5. Other Vio-No Arrest	51	81.0%	9	75.0%	6	60.0%	7	24.1%
6. Other-No ROV Data	2	3.2%	0	0%	0	0%	0	0.0%
Total/Percentage	63	100%	12	100%	10	100%	29	100%

DEFINITIONS TO REVOCATION CATEGORY REASONS ABOVE:

1. New Felony/Aggravated Misdemeanor Conviction (data from ICIS)
2. New conviction other than Felony/Aggravated convictions (data from ICIS)
3. New arrest (data pulled from ICIS)
4. No arrests/convictions in ICIS, however, Violation Report contains a violation behavior code of "New Arrest" (ICON data)
5. No arrests/convictions, technical violations only (data from ICON)
6. No arrests/convictions, however, no Violation Report in ICON

Parole Supervision Status: Any offenders whose parole was revoked and Work Release granted and were not physically received by IMCC or paroled to a detainer and revoked in a prior fiscal year, but were not physically received by IMCC until the current fiscal year will not be included in above count.

RECIDIVISM

Recidivism is defined as subsequent convictions for felonies or aggravated misdemeanors of offenders who discharged (final closure) from correctional supervision within the report date range (7/1/09 - 6/30/10).

By Supervision Status:

Supervision Status	Count Closures	Offenders Recidivating	Recidivism Rate
Parole	120	30	25.0%
Probation	2,046	324	15.8%
Sum:	2,166	354	16.3%

By Offense Type:

	Aggravated Misdemeanor	B Felony	C Felony	D Felony	OFOF	Supervision Status Totals
Parole	23	0	2	5	0	30
Probation	245	3	14	61	1	324
Offense Class Totals	268	3	16	66	1	354

NOTE: The offender can be counted multiple times for each supervision status closure. OWI Continuum and Work Release Supervision Statuses are excluded due to most offenders going to parole supervision from these placements.